

TRAVERTINI AL CONTROLLO

PORCELAIN TILE



GRANITI VICENTIA
GROUP



GRANITI VICENTIA BRINGS VALUE TO OUR CUSTOMERS

Graniti Vicentia provides **solutions to create spaces** that support and reflect the individuality, image and brand statement of our customers. We offer a menu of products, services and support to develop your project from the conception to completion.

Our approach is based on a collaborative team of professionals who share their knowledge to work on the project, from concept design, to the technical development of product solutions, through installation.

OUR GOAL IS ALWAYS TO EXCEED THE OWNER'S EXPECTATIONS.

■ SURFACE SOLUTIONS FOR EVERY NEED

GV Surfaces is the division within Graniti Vicentia Group that focuses on surface solutions solutions. We provide innovative solutions that respond to the interior and exterior needs of each of our customers. The flexibility of ceramics allows for each surface to be defined and chosen to create a space with design intent. The portfolio of products offered is the continued effort of GV Surfaces

to keep current. We take great care to select products displaying the **latest trends** in design combined with the **extraordinary quality** and cutting-edge technology of the constant and never-ending research of our vendors. This, along with GV Group's offer of value added fabrication services, provides our customers with **value design**, quality and the performance of surface materials.

QUALITY PRODUCTS FOR UNIQUE PROJECTS.



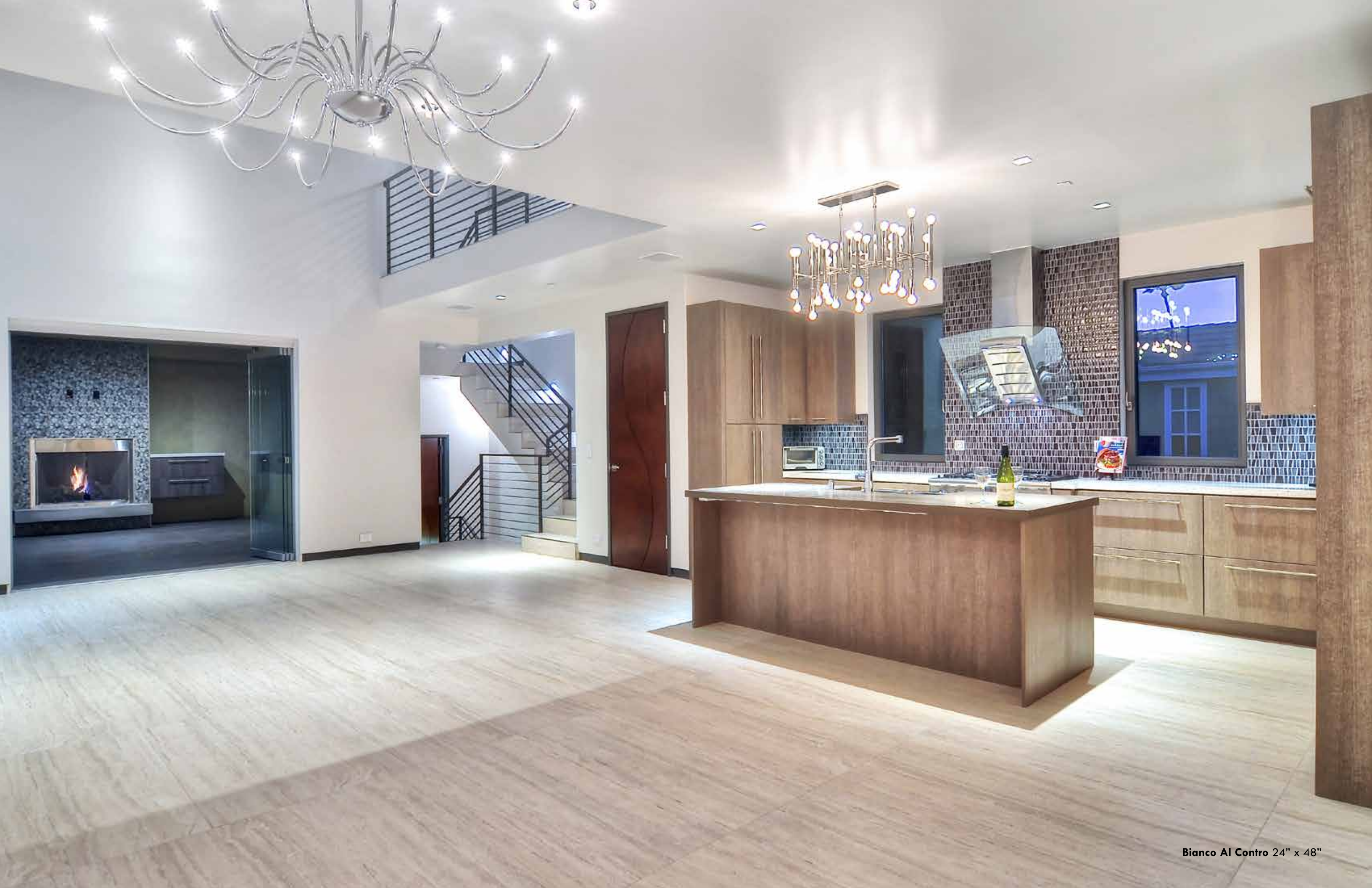


Argento Al Contro 24" x 48"

Travertini Al Contro Collection



Argento Al Contro



Travertini Al Contro Collection



Bianco Al Contro



Grigio Al Contro



Argento Al Contro



24 x 48

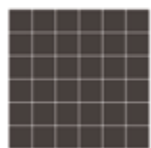


12 x 24

| | |
|-------------------|------------|
| Bianco Al Contro | IRG2448112 |
| Grigio Al Contro | IRG2448113 |
| Argento Al Contro | IRG2448114 |

| | |
|-------------------|------------|
| Bianco Al Contro | IRG1224112 |
| Grigio Al Contro | IRG1224113 |
| Argento Al Contro | IRG1224114 |

Mosaics & Trim



Mosaic

2 x 2 mesh mounted on 12 x 12 sheet



Brick 03 Mosaic

2 x 6 mesh mounted on 12 x 12 sheet



Bullnose

4 x 24

| | |
|-------------------|------------|
| Bianco Al Contro | IRG12M112P |
| Grigio Al Contro | IRG12M113P |
| Argento Al Contro | IRG12M114P |

| | |
|-------------------|-------------|
| Bianco Al Contro | IRG12MB3112 |
| Grigio Al Contro | IRG12MB3113 |
| Argento Al Contro | IRG12MB3114 |

| | |
|-------------------|-------------|
| Bianco Al Contro | IRG424BT112 |
| Grigio Al Contro | IRG424BT113 |
| Argento Al Contro | IRG424BT114 |



Grigio Al Contro 24" x 48"



Argento Al Contro & Grigio Al Contro various sizes

C1028
COF
 Dry ≥ 0.75
 Wet ≥ 0.60

Acutest
DCOF
 Wet ≥ 0.42

Travertini Al Contro Tech Specs

| PHYSICAL PROPERTIES | TEST | INDUSTRY STANDARDS | IRIS US RESULTS COLORED BODY |
|----------------------------------|------------|--|----------------------------------|
| Water Absorption | ASTM C373 | 0.5% Maximum | ≤ 0.1% |
| Size | | | |
| Calibrated (non rectified) | ASTM C499 | • Range of Thickness (inch) 0.040 | ≤ 0.040 |
| | ASTM C499 | • Average Facial Dimension ± 0.50% | ≤ ± 0.50% |
| | ASTM C485 | • Warpage ± 75% on any edge | ≤ ± 0.75% |
| | ASTM C485 | • Warpage ± 50% on diagonal | ≤ ± 0.50% |
| | ASTM C502 | • Wedging ± 0.50% | ≤ ± 0.50% |
| Rectified | ASTM C499 | • Range of Thickness (inch) 0.040 | ≤ 0.040 |
| | ASTM C499 | • Average Facial Dimension ± 0.25% | ≤ 0.25% |
| | ASTM C485 | • Warpage ± 0.40% on any edge | ≤ 0.40% |
| | ASTM C485 | • Warpage ± 0.40% on diagonal | ≤ 0.40% |
| | ASTM C502 | • Wedging ± 0.25% | ≤ 0.25% |
| Bond Strength | ASTM C482 | 50 psi or greater | > 200 psi |
| Deep Abrasion | ASTM C1243 | < 175 mm ³ | < 150 mm ³ |
| Hardness (Mohs scale) | | No requirement | ≥ 7 |
| Frost Resistance (Freeze/Thaw) | ASTM C1026 | No sample must show alterations to surface | No cracking or spalling occurred |
| Chemical Resistance | ASTM C650 | No requirement | Class A |
| Breaking Strength | ASTM C648 | 250 lbf or greater | ≥ 350 lbf |
| Coefficient of Friction (static) | ASTM C1028 | No requirement | Per collection |

Data taken from a representative colored body collection. Individual product testing can be conducted by request.

Coefficient of Friction: All values given are for matte or honed material. No values are given for polished material. Iris U.S. does not recommend polished surfaces in areas subject to exposure from grease, oil or water. (All values are based on ASTM C1028 and Acutest DCOF.)

Travertini Al Contro Packaging

| PRODUCT | SIZE | BOX PIECES | BOX SF | PALLET BOXES | PALLET SF | THICKNESS | WEIGHT LB/SF |
|-----------------------|---------|------------|--------|--------------|-----------|-----------|--------------|
| Floor & Wall Tile | 24 x 48 | 4 | 31.668 | 20 | 633.36 | 8 | 3.83 |
| | 12 x 24 | 8 | 15.751 | 32 | 504.03 | 8 | 3.55 |
| Mosaics 12 x 12 Sheet | 2 x 6 | 5 | 4.896 | - | - | 8 | 3.55 |
| | 2 x 2 | 5 | 4.896 | - | - | 8 | 3.55 |
| Bullnose | 4 x 24 | 16 | 10.39 | - | - | 8 | 2.00 |

LB PER PIECE



GRANITI VICENTIA
GROUP

2135 State Highway 6 South
Houston, Texas 77077

Phone: +1 713-869-0800

www.granitivicentia.com
info@granitivicentia.com



GRANITI VICENTIA
GROUP



GRANITI VICENTIA

GROUP