

# NAGOMI

---

PORCELAIN TILE



GRANITI VICENTIA  
GROUP



## GRANITI VICENTIA BRINGS VALUE TO OUR CUSTOMERS

Graniti Vicentia provides **solutions to create spaces** that support and reflect the individuality, image and brand statement of our customers. We offer a menu of products, services and support to develop your project from the conception to completion.

Our approach is based on a collaborative team of professionals who share their knowledge to work on the project, from concept design, to the technical development of product solutions, through installation.

OUR GOAL IS ALWAYS TO EXCEED THE OWNER'S EXPECTATIONS.

---

## ■ SURFACE SOLUTIONS FOR EVERY NEED

**GV Surfaces** is the division within Graniti Vicentia Group that focuses on surface solutions solutions. We provide innovative solutions that respond to the interior and exterior needs of each of our customers. The flexibility of ceramics allows for each surface to be defined and chosen to create a space with design intent. The portfolio of products offered is the continued effort of GV Surfaces

to keep current. We take great care to select products displaying the **latest trends** in design combined with the **extraordinary quality** and cutting-edge technology of the constant and never-ending research of our vendors. This, along with GV Group's offer of value added fabrication services, provides our customers with **value design**, quality and the performance of surface materials.

QUALITY PRODUCTS FOR UNIQUE PROJECTS.

---



ATELIER 

Atelier Mirage serves as the hub of our collaborations with internationally renowned architects and interior designers, representing not just an extension of our catalog, but a true catalyst for innovation in Mirage's commitment to ceramic innovation and stylistic research. Through this project, we highlight our ongoing dedication to innovating and redefining ceramic surfaces within contemporary architecture, showcasing the potential of new forms and functions that Italian ceramics can offer to enrich modern architectural spaces.

Atelier Mirage si configura come il fulcro delle nostre collaborazioni con architetti e designer d'interni di fama internazionale, rappresentando non meramente una estensione del nostro catalogo, ma un vero e proprio catalizzatore di rinnovamento per l'impegno di Mirage nell'innovazione e nella ricerca stilistica della ceramica. Con questo progetto, mettiamo in evidenza il nostro impegno continuo nell'innovazione e nella ridefinizione delle superfici ceramiche nell'ambito dell'architettura contemporanea, dimostrando il potenziale di nuove forme e funzioni che la ceramica italiana può offrire per arricchire gli spazi architettonici contemporanei.

# Nagomi

## Hadi

## Teherani

ATELIER 

# Inspiring better living

Right from the beginning, we've devoted our efforts to exploring and promoting porcelain stoneware, a material that teams beauty with versatility. We are deeply bound to the Italian ceramic tradition, and have invested pride and passion in carrying forward this heritage in over 150 countries worldwide. As ambassadors of Italian craftsmanship, our commitment to providing sustainable solutions for the well-being of the community and the environment is a model of excellence. **We are Mirage, the company where each ceramic surface has a story to tell, bursting with beauty and passion.**

Fin dai nostri esordi, ci siamo immersi con dedizione nell'esplorazione e valorizzazione del gres porcellanato, un materiale che unisce la bellezza estetica alla versatilità. Profondamente legati alla tradizione ceramica Made in Italy, è con orgoglio e passione che abbiamo portato avanti quest'eredità in oltre 150 Paesi nel Mondo. Come ambasciatori del Made in Italy, il nostro impegno nella realizzazione di soluzioni sostenibili per il benessere della comunità e dell'ambiente rappresenta un paradigma di eccellenza. **Siamo Mirage, l'azienda in cui la ceramica si trasforma in narrazione e dove ogni superficie racconta una storia ricca di passione e bellezza.**



“Sustainability is a fundamental aspect. I’ve always adopted a holistic approach, considering architecture, interior design, and product design as one entity.”

“La sostenibilità è un aspetto fondamentale. Ho sempre adottato un approccio olistico, considerando architettura, il design d’interni e di prodotto come un’unica entità.”

## Hadi Teherani

Pioneering sustainable architecture, such as Germany’s first ‘green’ railway station and the ‘Crane Houses’ in Cologne, Hadi Teherani is a German architect and designer. Functionality, sustainability, and beauty are the cornerstones of his approach, which is evident in international projects spanning from Abu Dhabi to Berlin, Dubai to New York.

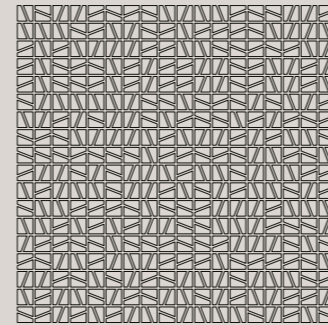
Pioniere dell’architettura ecocompatibile, come la prima stazione ferroviaria “green” in Germania e le “Crane Houses” a Colonia, Hadi Teherani è un architetto e designer tedesco. Funzionalità, sostenibilità, bellezza sono i pilastri del suo approccio, che si esprime in progetti internazionali, da Abu Dhabi a Berlino, da Dubai a New York.



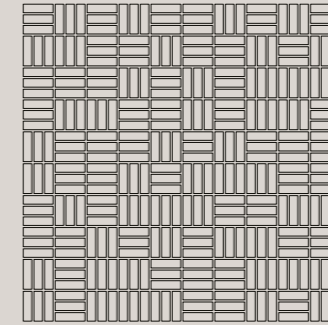


“The collection can be described in three words: poetry, harmony, and order.”

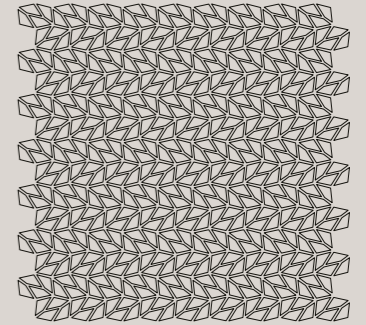
“La collezione si può descrivere in tre parole: poesia, armonia e ordine.”



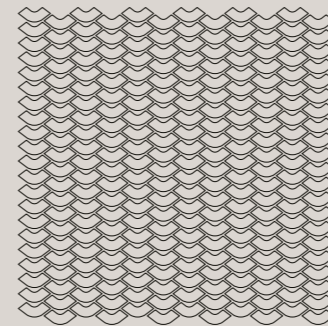
Sabi



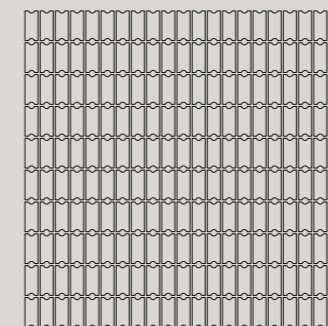
Riku



Kazuki



Miyu



Ami

Nagomi goes beyond the traditional concept of mosaic, becoming a language through which to narrate stories of spaces that harmonize with their inhabitants and the environment.

It embodies a synthesis between the precision of architecture and the poetry of surfaces, merging the accuracy of technique with the fluidity of natural forms.

Nagomi di trascende il concetto tradizionale di mosaico, per diventare un linguaggio attraverso il quale raccontare storie di spazi che vivono in armonia con chi li abita e con l'ambiente che li ospita. È una sintesi tra il rigore dell'architettura e la poesia delle superfici, tra la precisione della tecnica e la fluidità delle forme naturali.

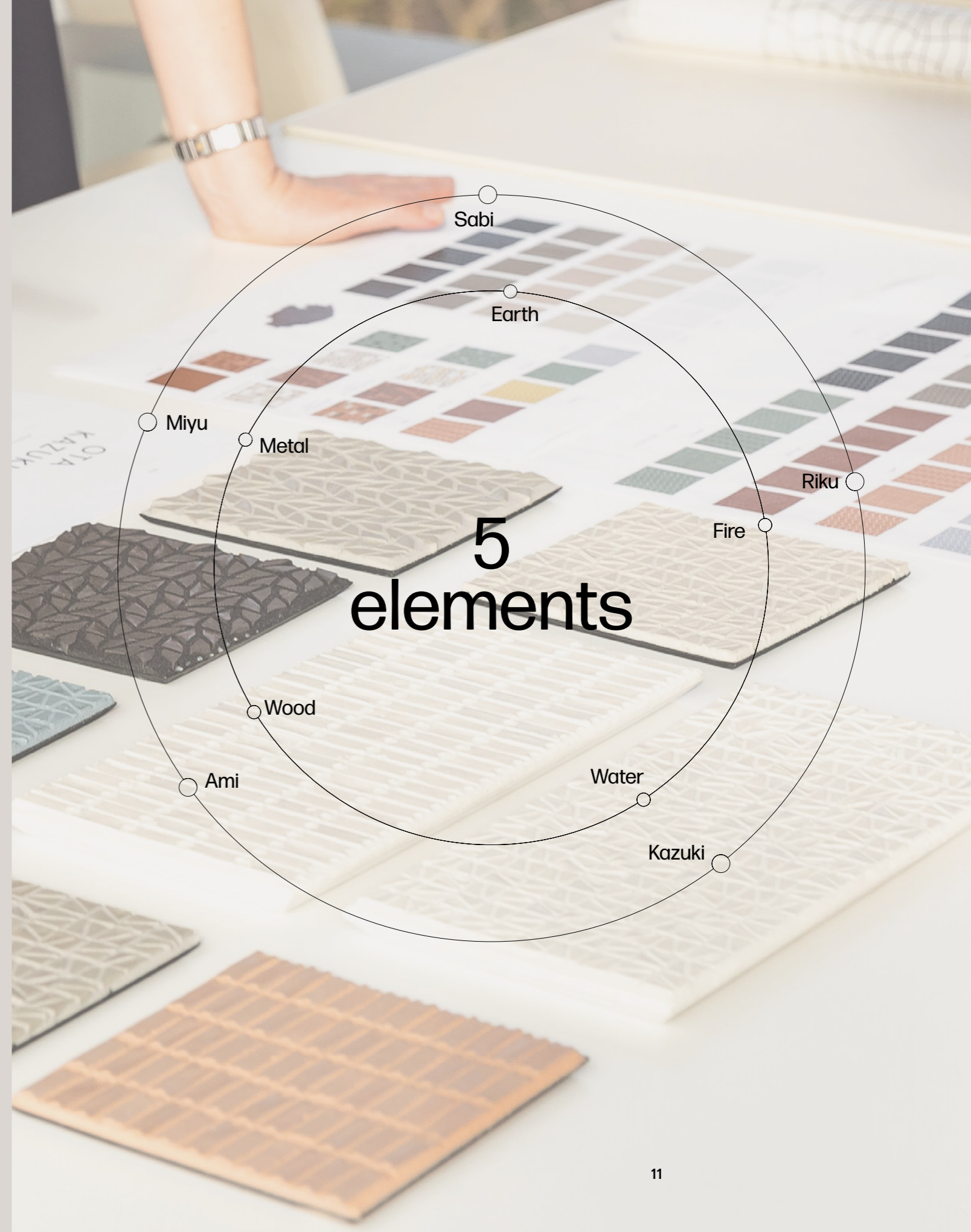


# Capturing the essence with five elements.

Catturare l'essenza con i cinque elementi.

The five elements, Sabi, Riku, Miyu, Ami, Kazuki, capture the essence of the primary elements of nature according to Japanese philosophy: water, wood, fire, metal, earth. Each shape, with its unique texture and shade, creates a harmony of sensations and well-being.

I cinque elementi, Sabi, Riku, Miyu, Ami, Kazuki, catturano l'essenza degli elementi primari della natura secondo la filosofia orientale: acqua, legno, fuoco, metallo, terra. Ogni forma, con texture e sfumature uniche, crea un'armonia di sensazioni e di benessere.

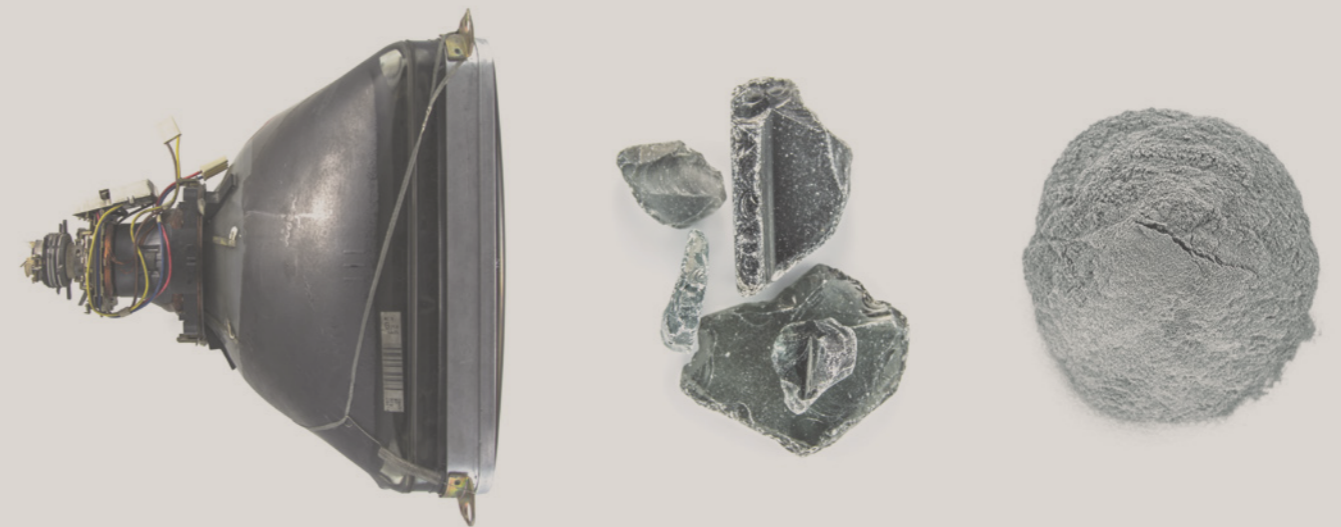


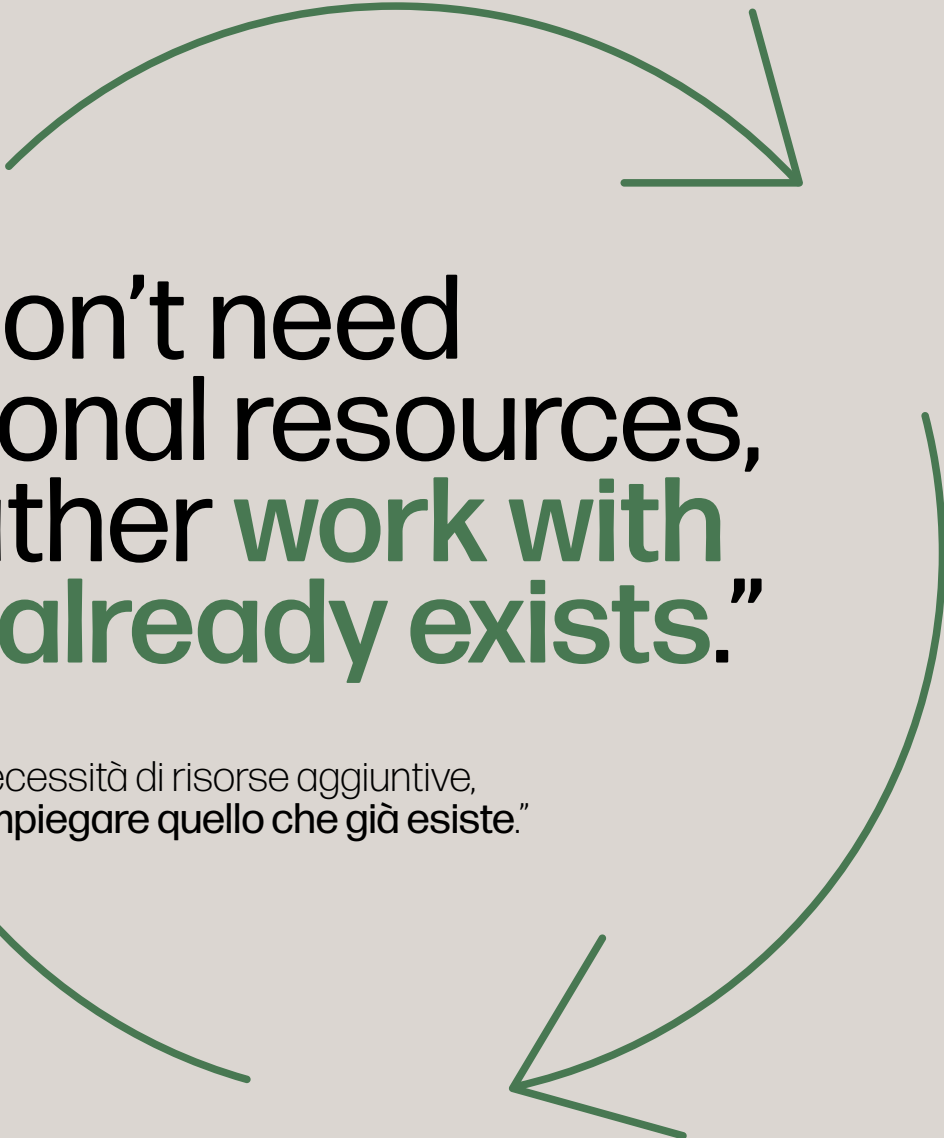
# Design of tomorrow: project and protect.

Il design del domani:  
progettare e proteggere.

## Nagomi reveals a significant percentage of glass derived from the recycling of cathode ray tubes.

Nagomi contiene una percentuale significativa  
di vetro derivato dal riciclo di tubi catodici.





“We don’t need additional resources, but rather **work with what already exists.**”

“Non abbiamo necessità di risorse aggiuntive, ma piuttosto di **impiegare quello che già esiste.**”

Nagomi innovates the concept of decoration with mindfulness: each tile represents an element of a broader design, oriented towards a future where design respects and enhances the resources of our planet. The collection is a step towards a future where form merges with substance, and where the aesthetics of our spaces are inseparably linked to their well-being.

Nagomi innova il concetto di decorazione con consapevolezza: ogni tessera rappresenta un elemento di un design più ampio, orientato verso un futuro in cui il design rispetta e valorizza le risorse del nostro pianeta. La collezione è un passo avanti verso un futuro in cui la forma si fonde con la sostanza, e in cui l'estetica dei nostri spazi è indissolubilmente legata al loro benessere.



# Simplicity rises as a manifesto of creativity.

La semplicità si eleva a manifesto di creatività.

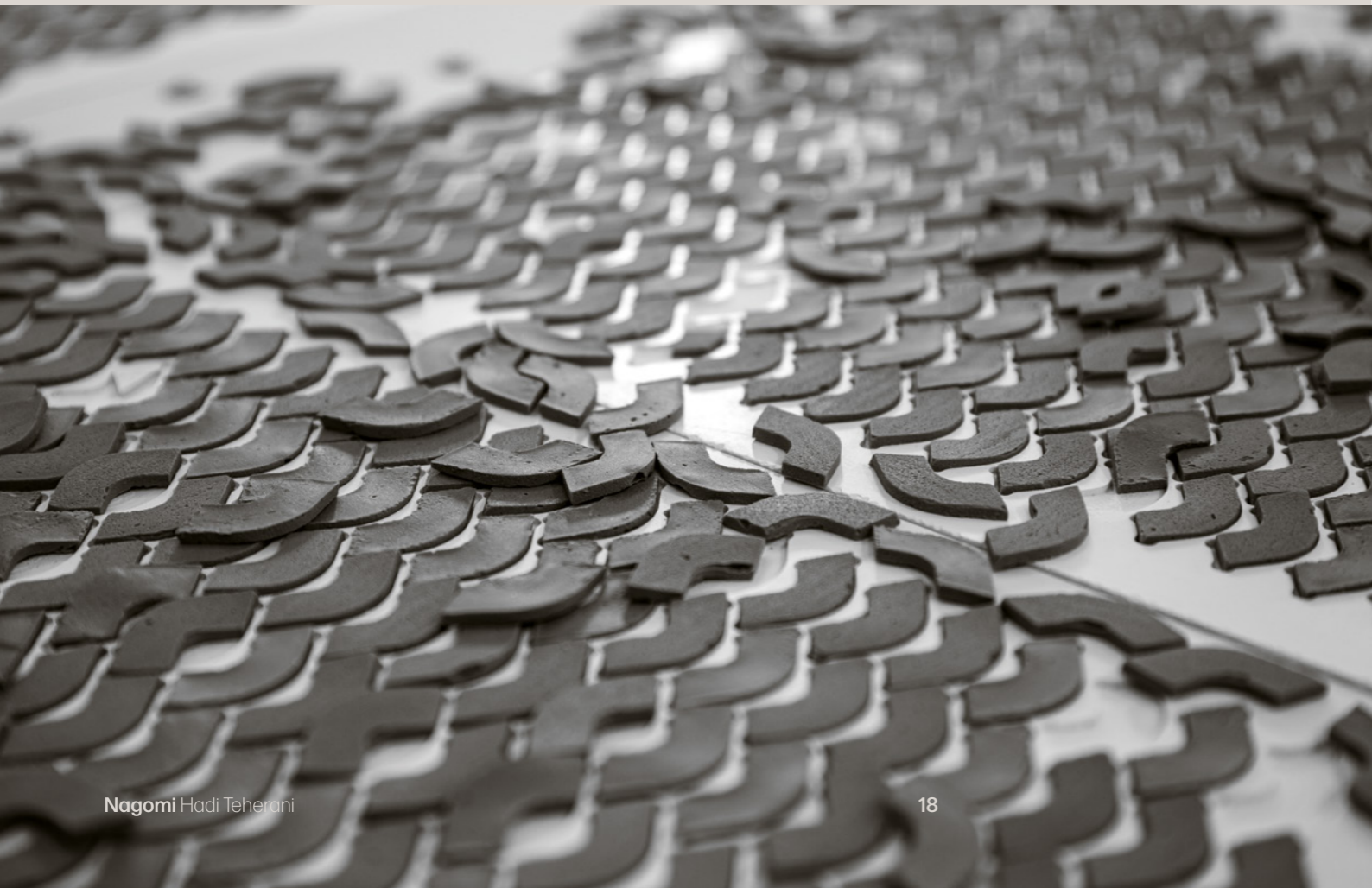
Nagomi interprets a new canon of beauty, founded on the appreciation of authenticity and commitment to sustainability. It's a celebration of ceramics in mindful design, where simplicity rises as a manifesto of creativity.

Nagomi interpreta un nuovo canone di bellezza, fondato sulla valorizzazione dell'autenticità e sull'impegno verso la sostenibilità. Una celebrazione della ceramica in un design consapevole, dove la semplicità si eleva a manifesto di creatività.



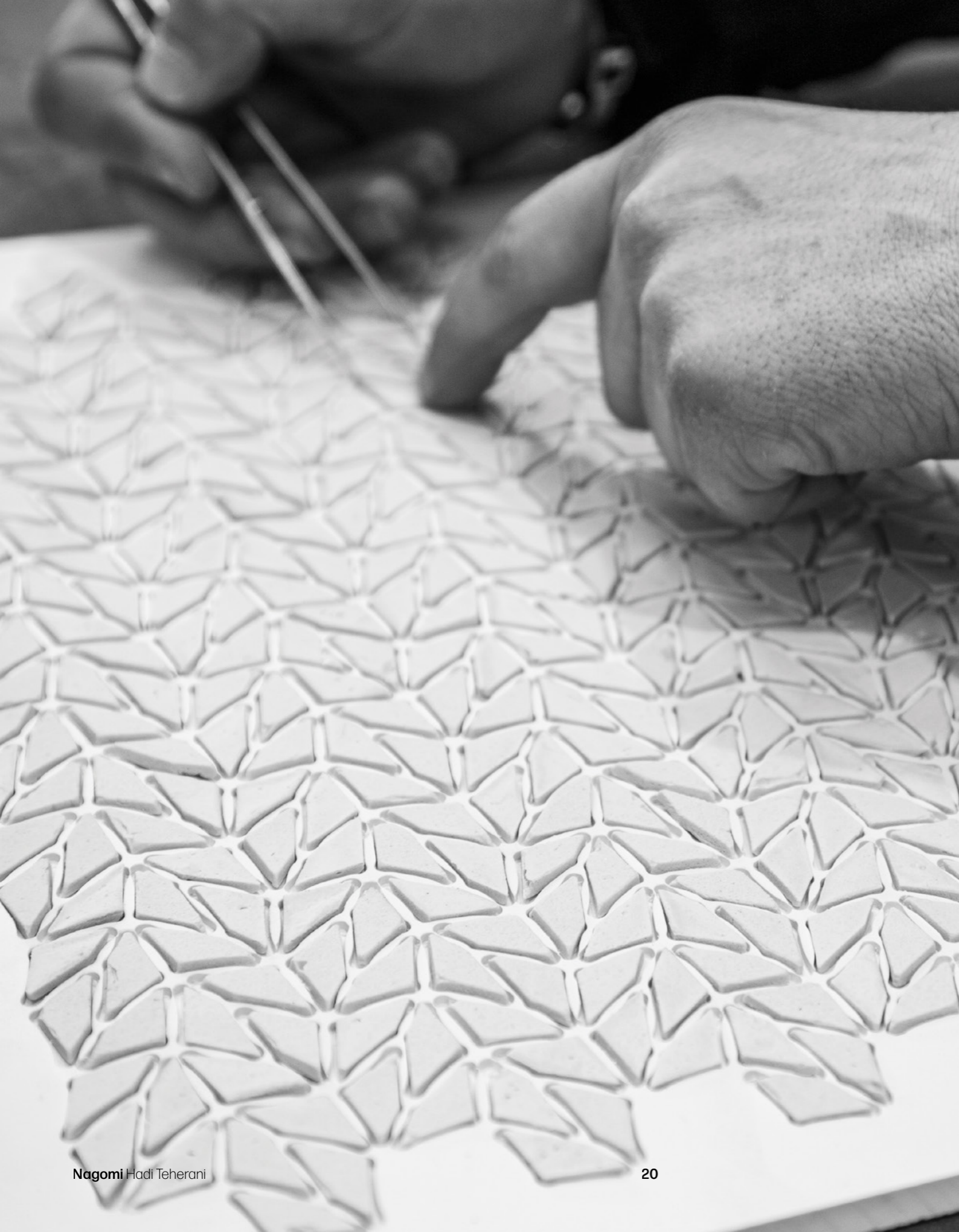
“Nagomi is an expression of a design that places **simplicity** as a design element.”

“Nagomi è espressione di un design che pone la **semplicità** come elemento progettuale.”



Five shapes create multiple compositions, incorporating graphic themes, linear textures, and organic elements. Each variation has its distinctive identity and communicates a different design concept.

Cinque forme creano molteplici composizioni, che includono temi grafici, trame lineari ed elementi organici. Ogni variazione ha la propria identità distintiva e comunica un'idea progettuale differente.



# “A perfect blend between technological innovation and artisanal tradition.”

“Una perfetta fusione tra innovazione tecnologica e tradizione **artigianale**.”

In an era of environmental crises and numerous technological and scientific innovations, we have opted for a solution that strikes a perfect balance between industrial production and the appeal of craftsmanship. The result is a product that, despite being the result of industrial processes, retains an artisanal soul, inspired by the Japanese philosophy of harmony with the environment.

In un'era di crisi ambientali e numerose innovazioni tecnologiche e scientifiche, abbiamo optato per una soluzione che trova un perfetto equilibrio tra produzione industriale e il fascino dell'artigianato. Il risultato è un prodotto che, pur essendo il risultato di processi industriali, conserva un'anima artigianale, ispirata alla filosofia giapponese dell'armonia con l'ambiente.

“Nagomi transcends the concept of purity and seamlessly integrates with other products.”





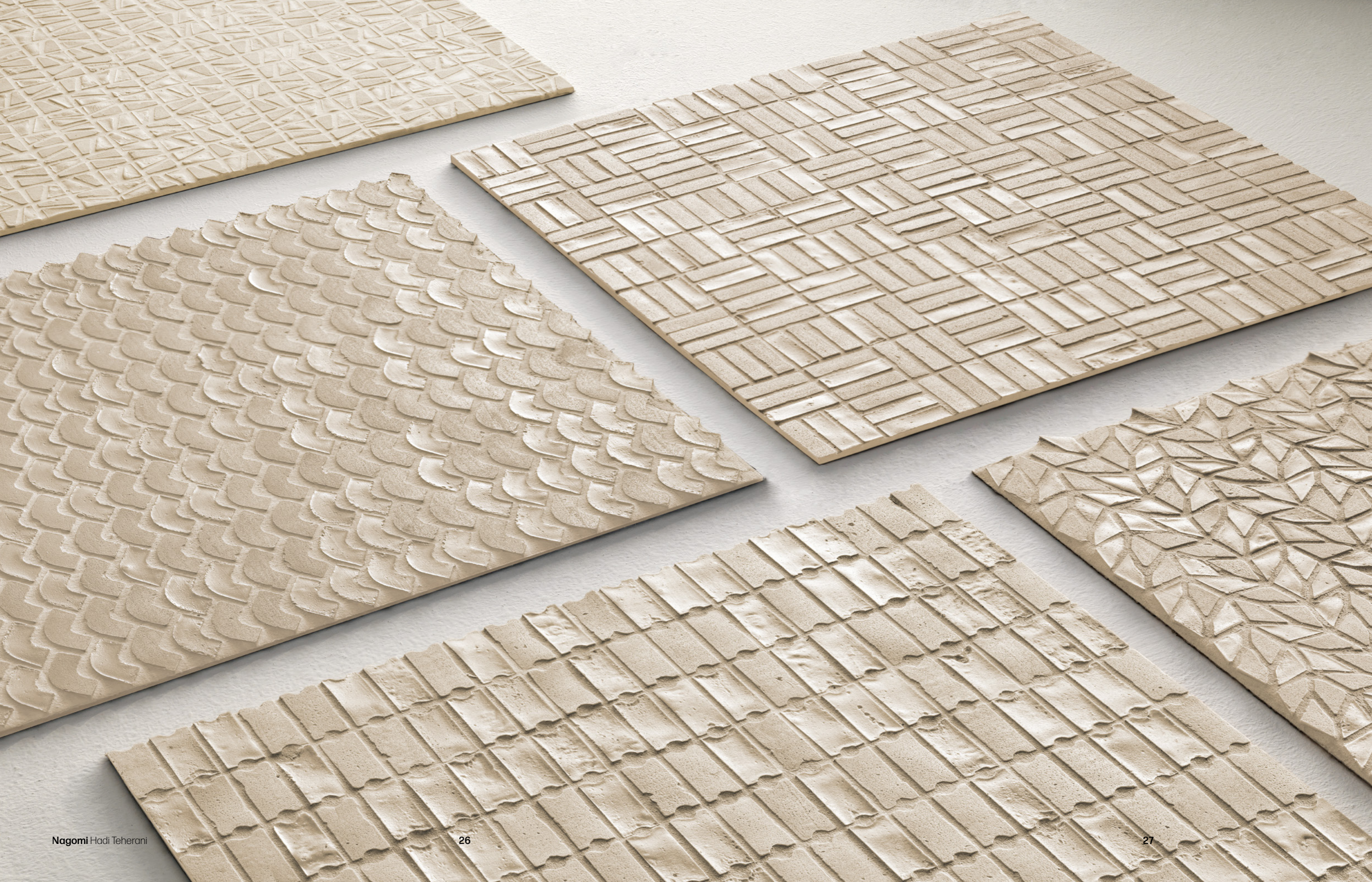
“No tile looks like the next. The random irregularities create an overall harmony.”

“Ogni tessera è diversa dalla successiva. Le irregolarità casuali creano un’armonia complessiva.”

The mosaic tiles feature different finishes: a juxtaposition of more or less evident opacities that create a textured and semi artisanal effect. Irregularities and surface abrasions are the random result of an industrial process that makes each tile unique and different from the others.

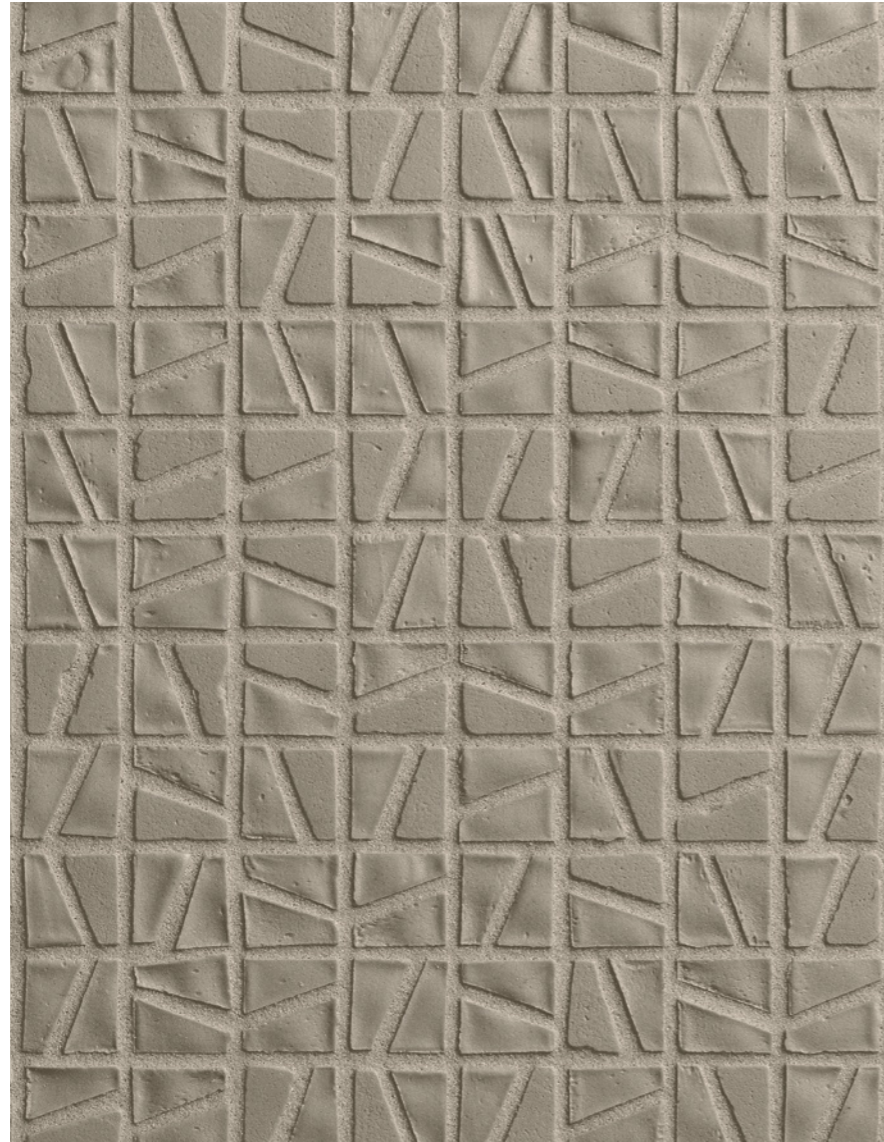
Le tessere dei mosaici presentano finiture differenti: una contrapposizione di opacità più o meno evidenti che crea un effetto materico e semiartigianale. Le irregolarità e le scalfiture superficiali sono il risultato casuale di un processo industriale che rende ogni tessera unica e diversa dalle altre.





# Patterns

# Sabi



Sabi\_NG04\_Soot 300x300\_12"x12"

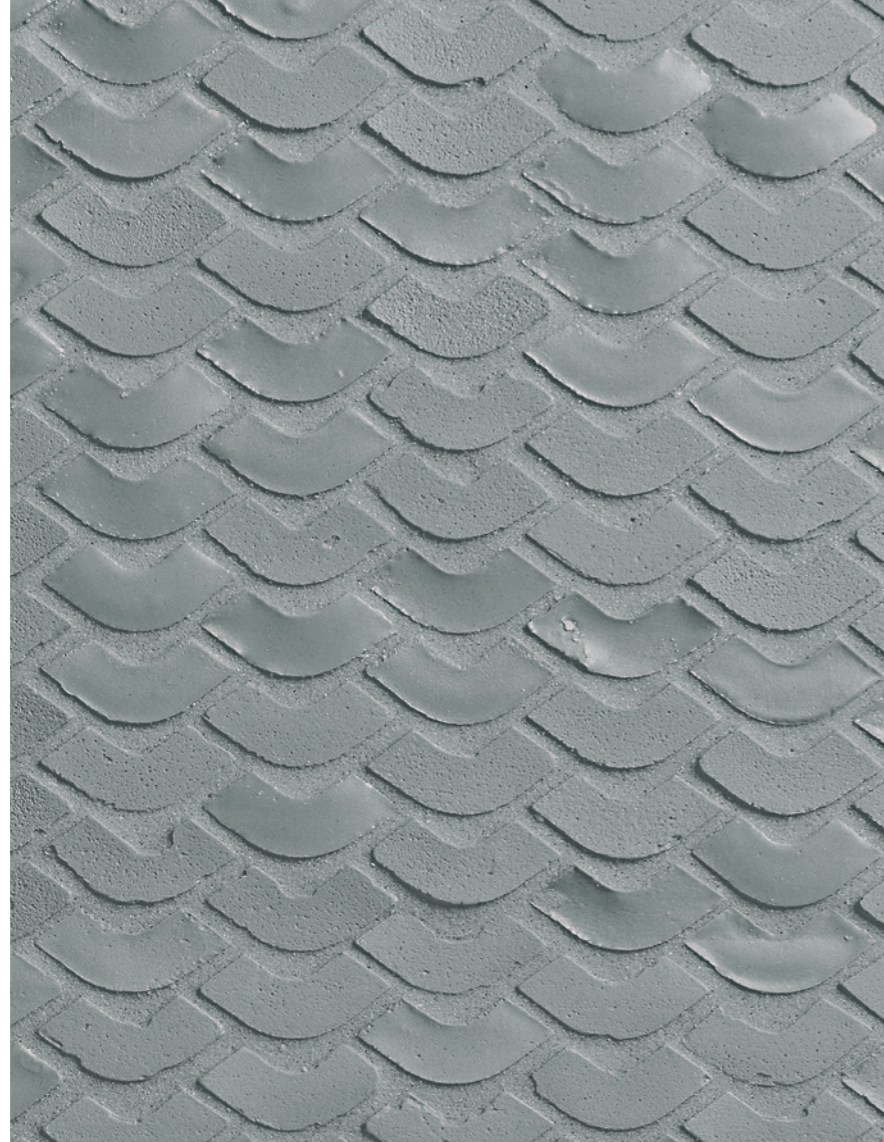


# Ami



Ami\_NG03\_Fog 300x300\_12"x12"

# Miyu



Miyu\_NG06\_Dove 300x300\_12"x12"





# Riku



Riku\_NG09\_Pale 300x300\_12"x12"

# Kazuki

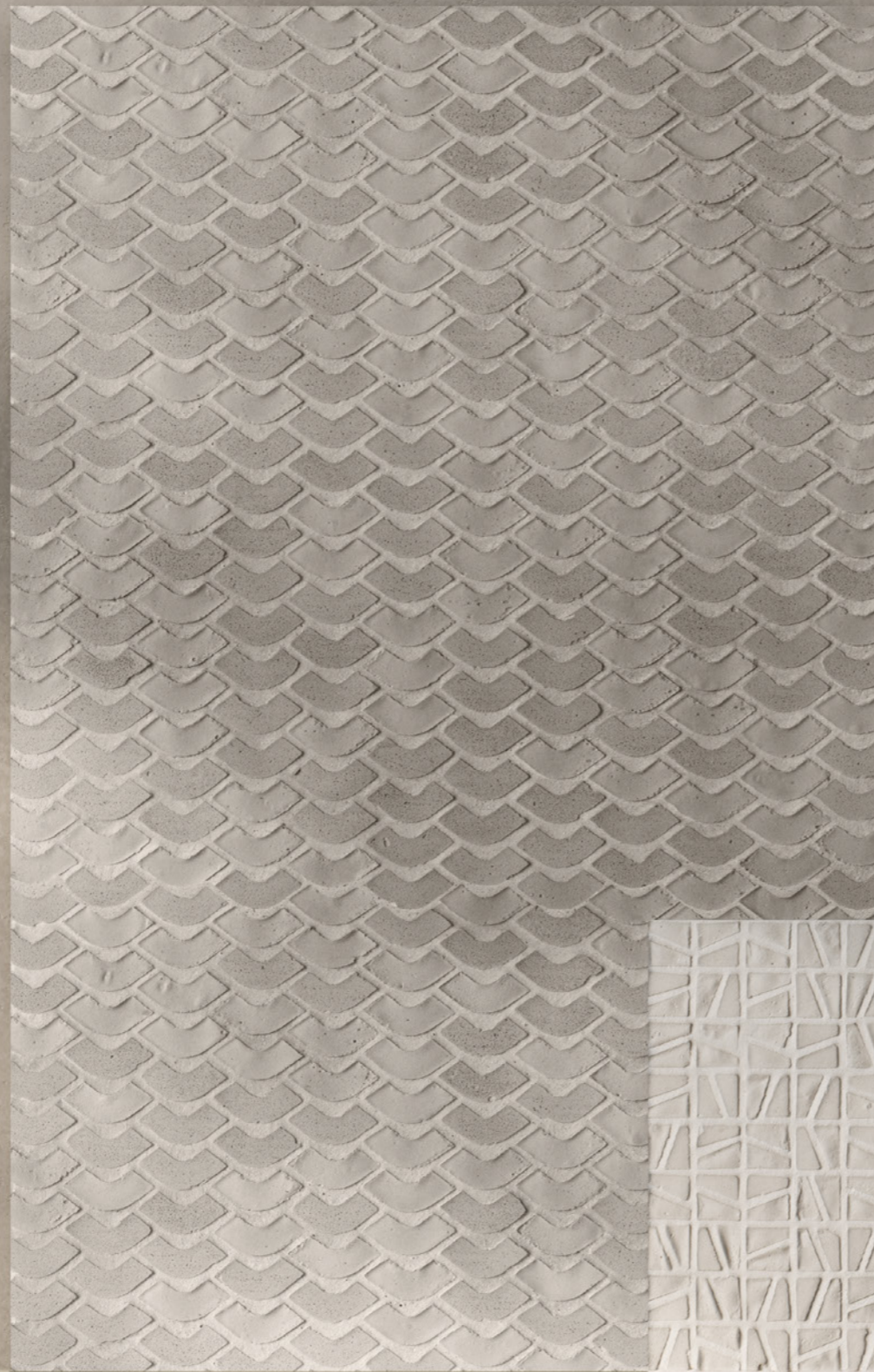


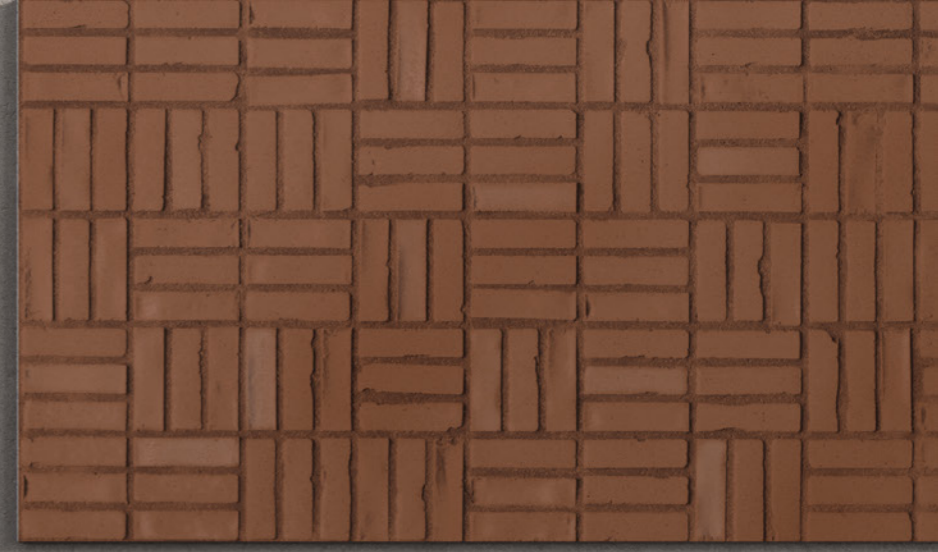
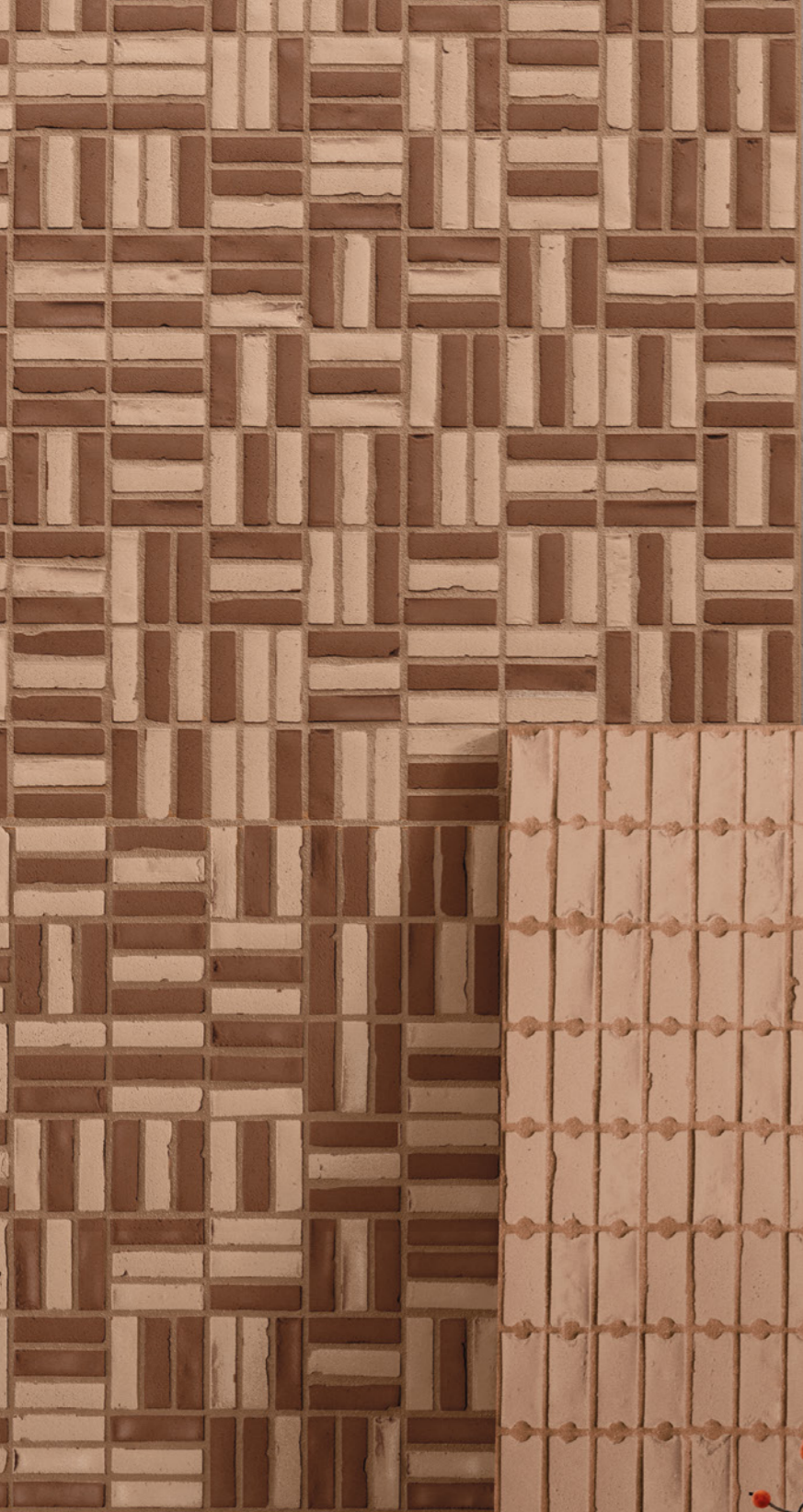
Kazuki\_NG01\_Crayon 300x300\_12"x12"

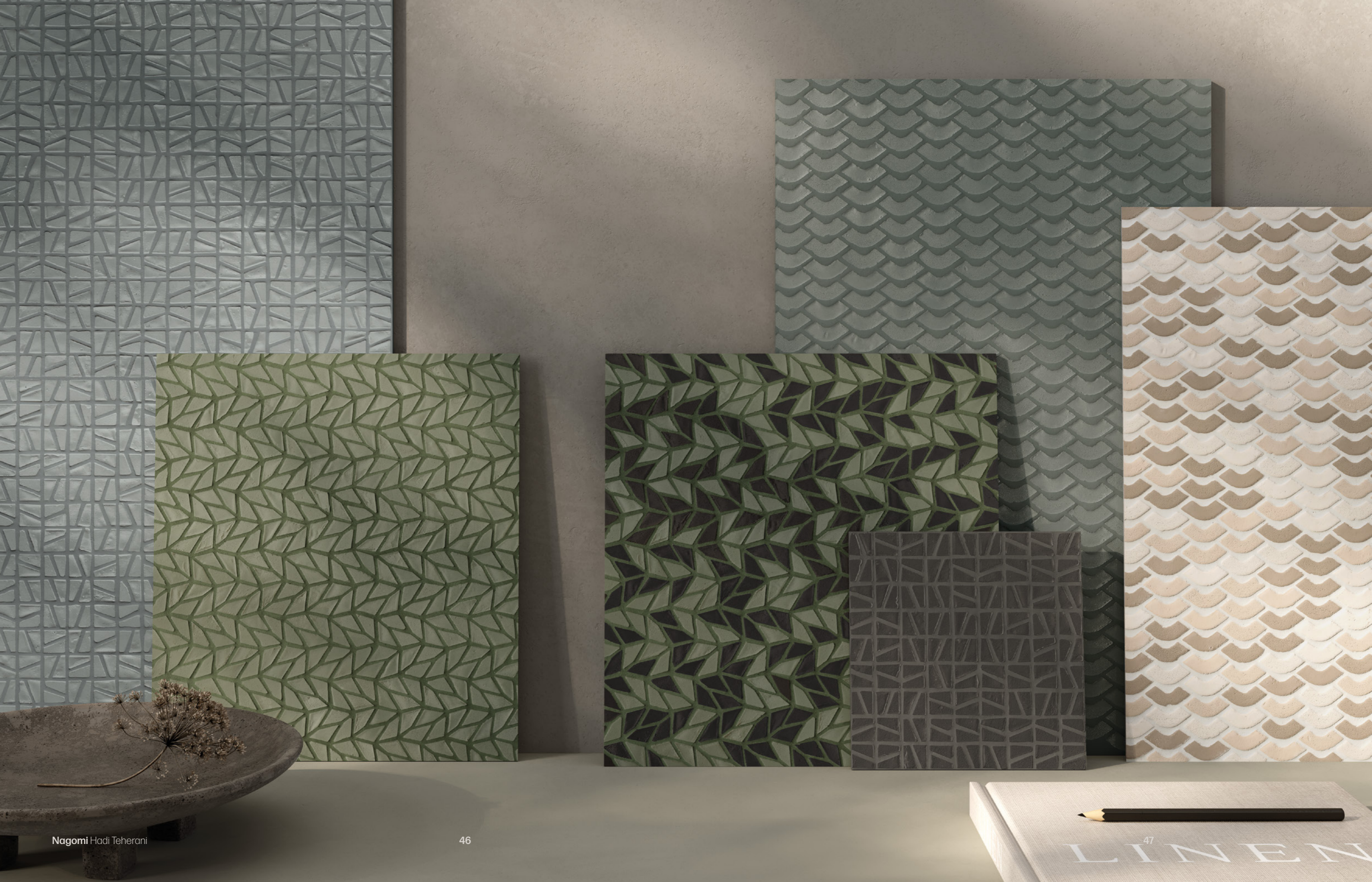


# Colors

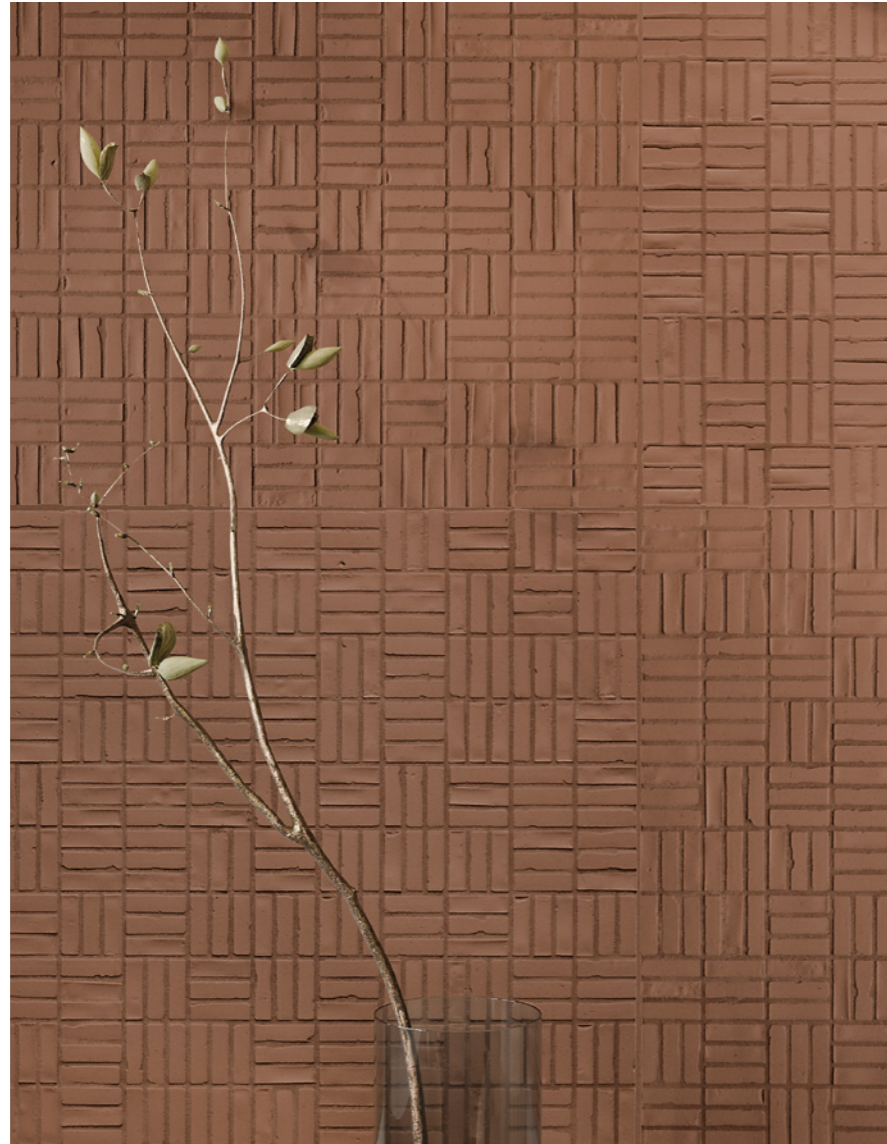








# Spaces



wall **Riku\_NG08\_Red Earth** 300x300\_12"x12" | **Glocal\_GC11\_Nebula** 1200x2780\_48"x110"  
floor **Glocal\_GC11\_Nebula** 1200x1200\_48"x48"





wall Kazuki\_NG05\_Basalt 300x300\_12"x12"



wall **Ami\_NG04\_Soot** 300x300\_12"x12"  
floor **Clay\_CL01\_Calm** 600x1200\_24"x48"



RELAX AREA  
CHROMOTHERAPY  
BIO SAUNA

wall **Sabi\_NG03\_Fog** 300x300\_12"x12" | **Clay\_CL01\_Calm** 1200x2780\_48"x110"  
floor **Clay\_CL01\_Calm** 1200x1200\_48"x48"





wall **Sabi\_NG03\_Fog** 300x300\_12"x12" | **Clay\_CL01\_Calm** 1200x2780\_48"x110"  
floor **Clay\_CL01\_Calm** 1200x1200\_48"x48"



wall **Miyu\_NG01\_Crayon** 300x300\_12"x12"  
 floor **Glocal\_GC01\_Clear** 1200x1200\_48"x48"  
 Bathmood and side wall **Glocal\_GC01\_Clear**

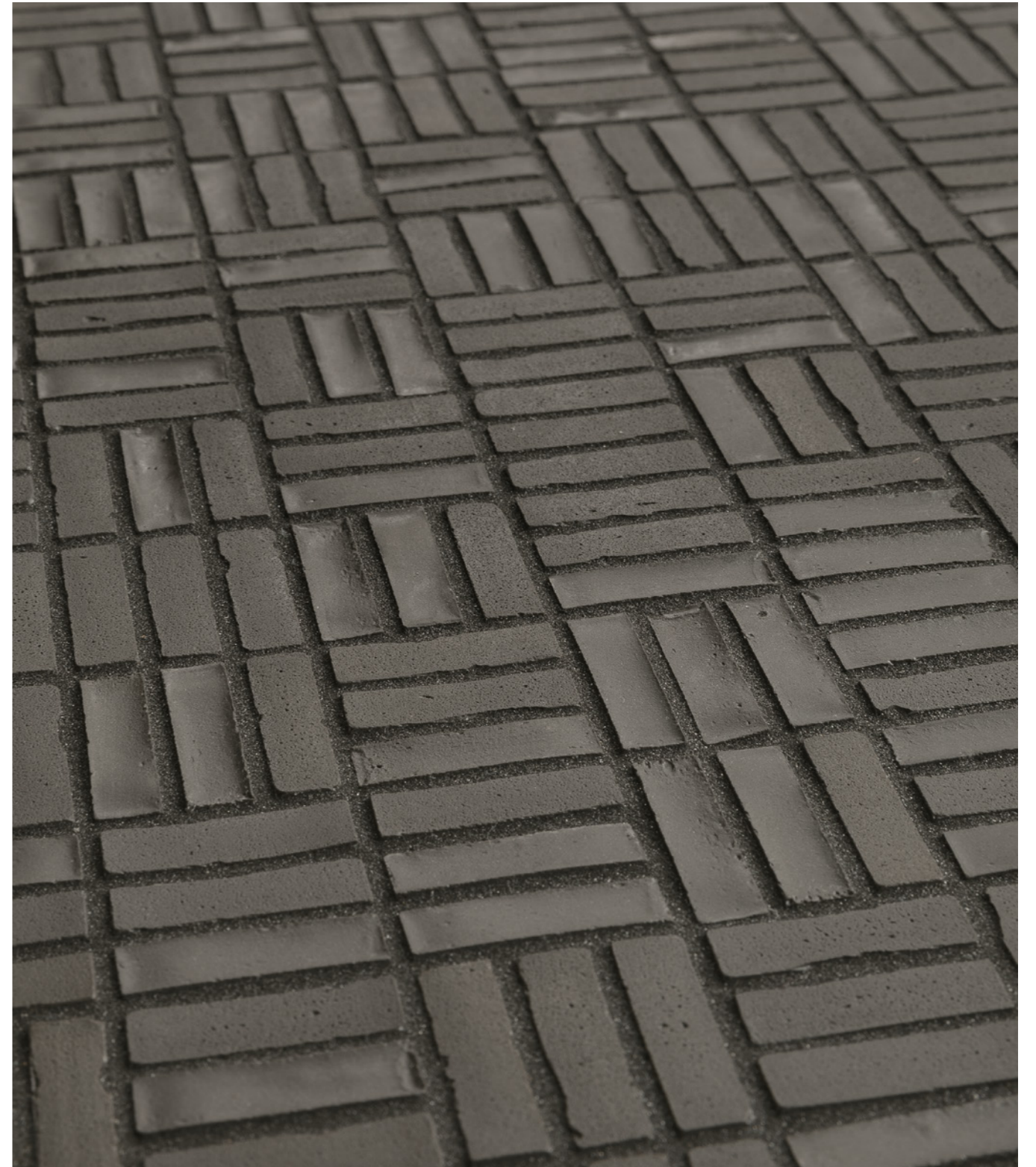


# 5 shapes

# Riku

Riku\_NG05\_Basalt 300x300\_12"x12" | thickness ▶ 2 mm ◀

1:1 scale



# Ami

Ami\_NG01\_Crayon 300x300\_12"x12" | thickness ▶ 2 mm ◀

1:1 scale



# Miyu

Miyu\_NG02\_Sand 300x300\_12"x12" | thickness ▶ 2 mm ◀

1:1 scale



# Sabi

Sabi\_NG04\_Soot 300x300\_12"x12" | thickness ▶ 2 mm ◀

1:1 scale



# Kazuki

Kazuki\_NG03\_Fog 300x300\_12"x12" | thickness ▶ 2 mm ◀

1:1 scale



# Range

# Specs

# Product range

Gamma prodotti

thickness ▶ 2mm ◀

Product suitable for wall coverings only.  
Prodotto adatto esclusivamente per l'applicazione a rivestimento.

## Sabi 300x300\_12"x12"



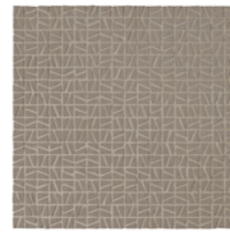
NG01 Crayon



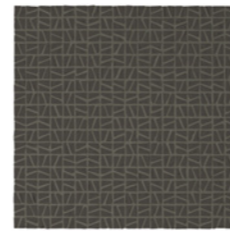
NG02 Sand



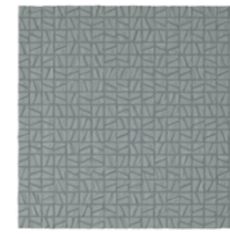
NG03 Fog



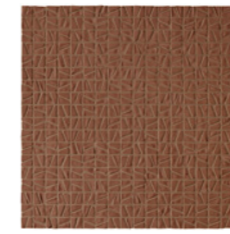
NG04 Soot



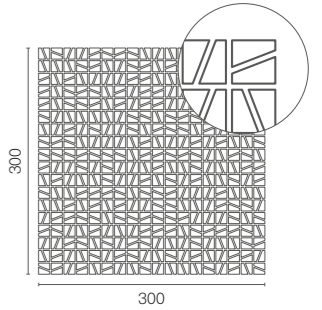
NG05 Basalt



NG06 Dove



NG08 Red Earth



## Riku 300x300\_12"x12"



NG01 Crayon



NG02 Sand



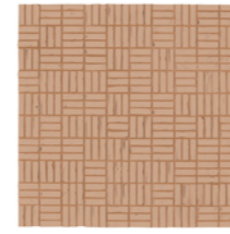
NG03 Fog



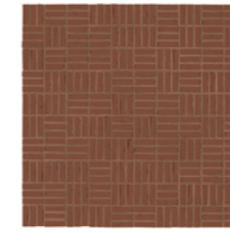
NG04 Soot



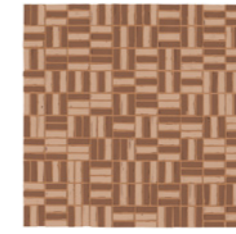
NG05 Basalt



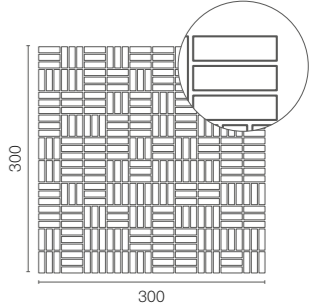
NG09 Pale



NG08 Red Earth



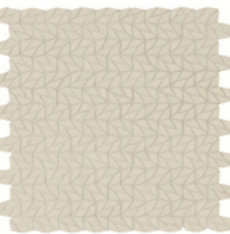
Mix NG08+NG09



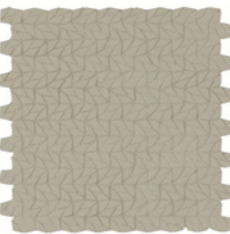
## Kazuki 300x300\_12"x12"



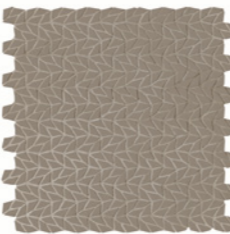
NG01 Crayon



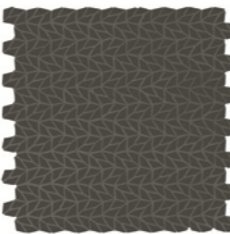
NG02 Sand



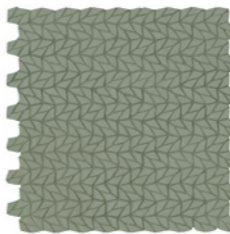
NG03 Fog



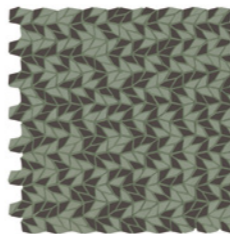
NG04 Soot



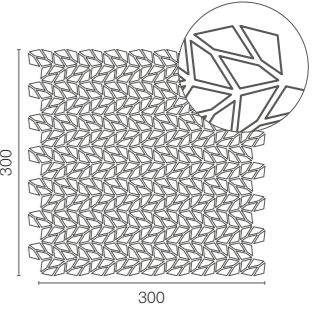
NG05 Basalt



NG07 Greenish



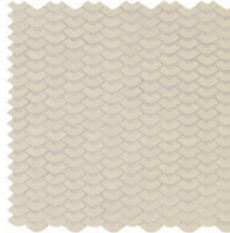
Mix NG07+NG05



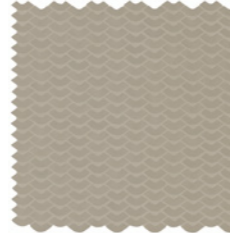
## Miyu 300x300\_12"x12"



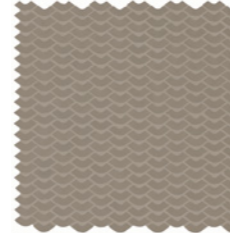
NG01 Crayon



NG02 Sand



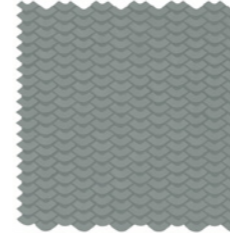
NG03 Fog



NG04 Soot



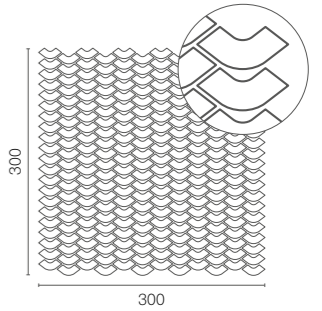
NG05 Basalt



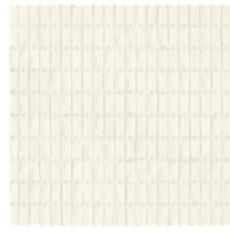
NG06 Dove



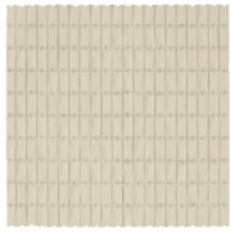
Mix NG01+NG02+NG03



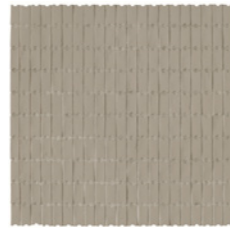
## Ami 300x300\_12"x12"



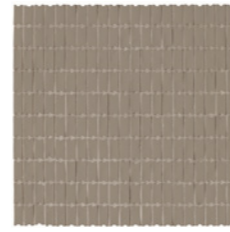
NG01 Crayon



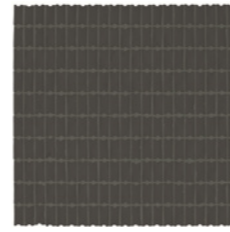
NG02 Sand



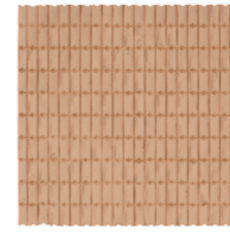
NG03 Fog



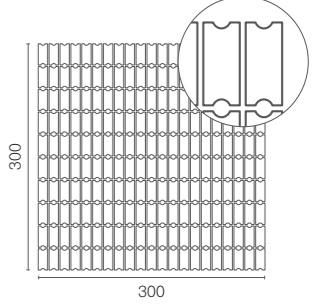
NG04 Soot



NG05 Basalt



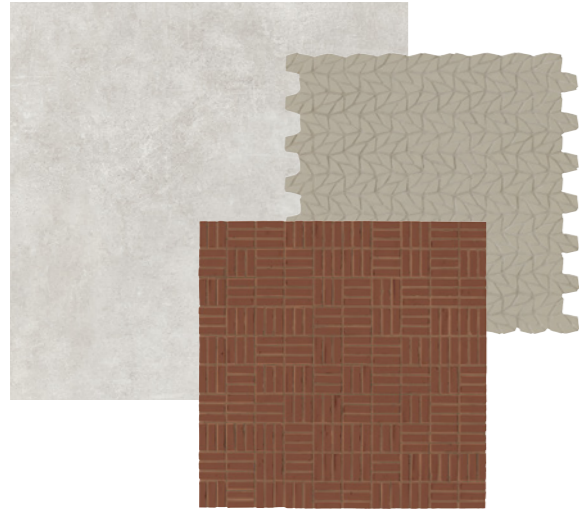
NG09 Pale



## Colour combinations: Nagomi + Glocal Collection

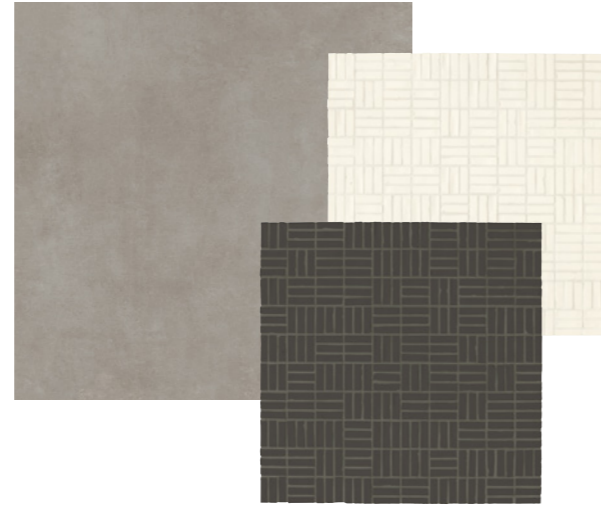
Matching suggestions by Hadi Teherani  
 Abbinamenti cromatici consigliati da Hadi Teherani

### Group A



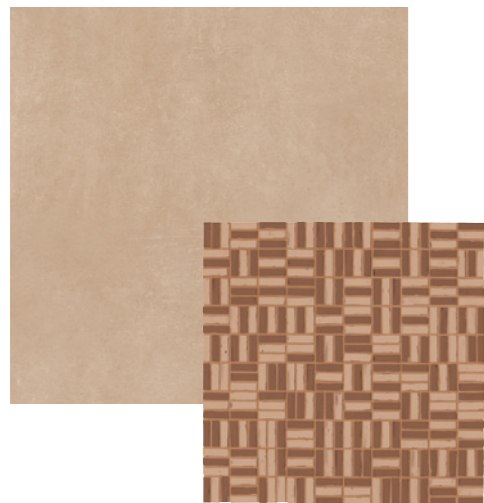
Clear\_GC01\_GLOCAL  
 Fog\_NG03\_Kazuki  
 Red Earth\_NG08\_Riku

### Group B



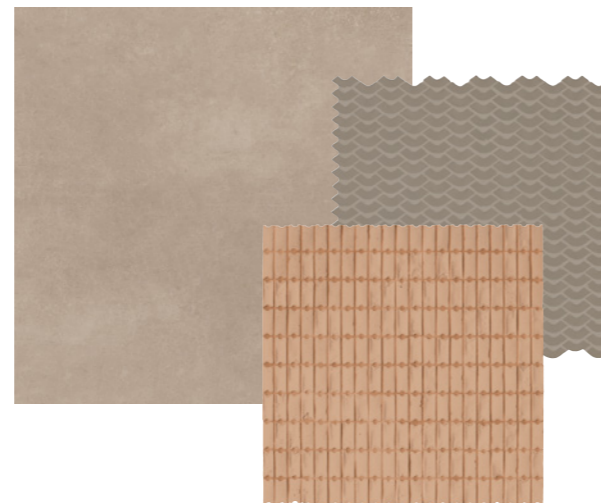
Ideal\_GC03\_GLOCAL  
 Crayon\_NG01\_Riku  
 Basalt\_NG05\_Riku

### Group C



Youth\_GC15\_GLOCAL  
 Mix\_NG08 + NG09\_Riku

### Group D

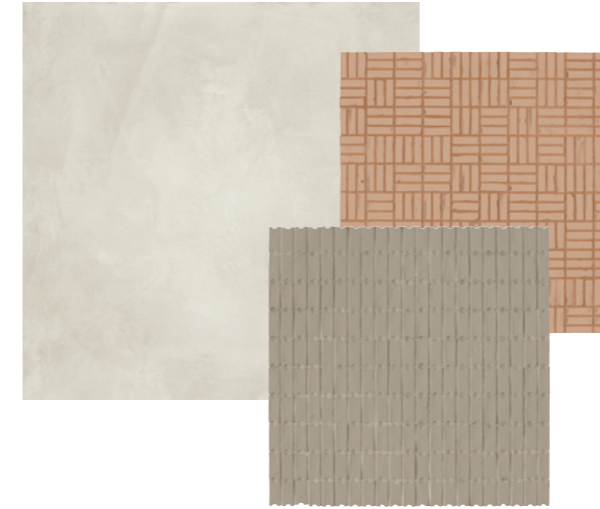


Harmony\_GC16\_GLOCAL  
 Pale\_NG09\_Ami  
 Soot\_NG04\_Miyu

## Colour combinations: Nagomi + Clay Collection

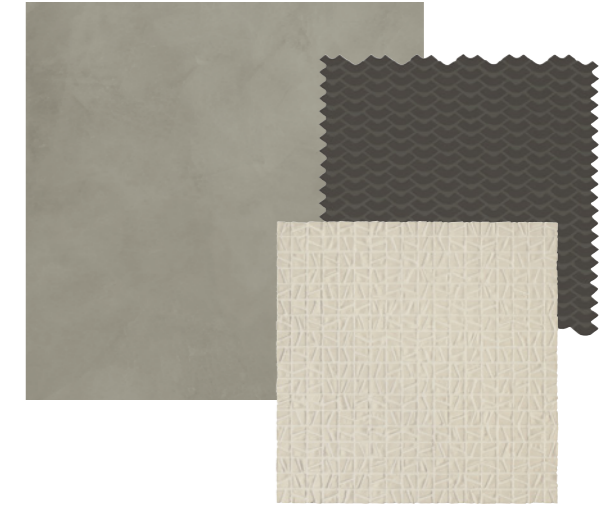
Matching suggestions by Hadi Teherani  
 Abbinamenti cromatici consigliati da Hadi Teherani

### Group E



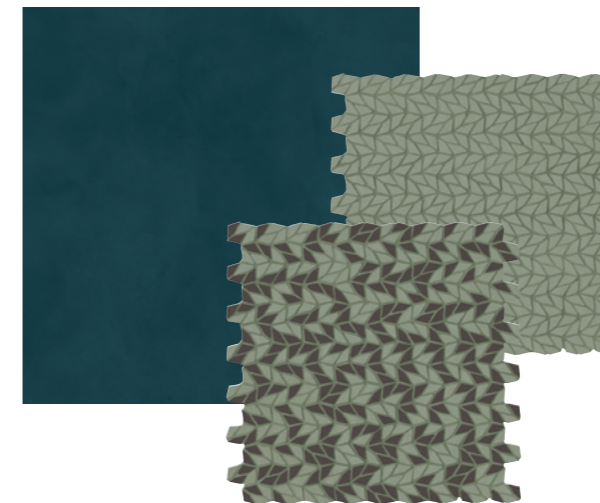
Calm\_CL01\_CLAY  
 Pale\_NG09\_Riku  
 Fog\_NG03\_Ami

### Group F



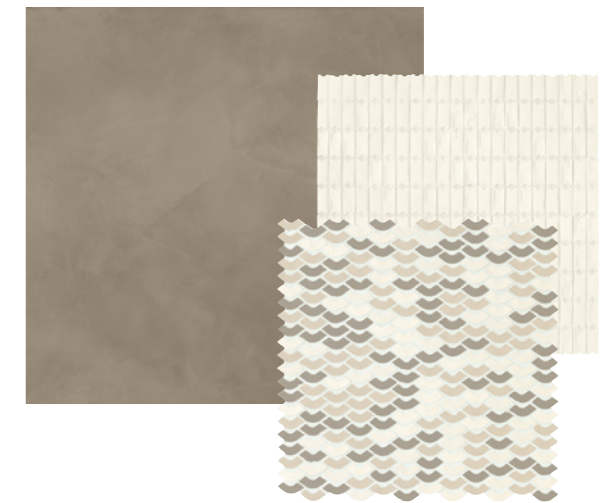
Awake\_CL03\_CLAY  
 Sand\_NG02\_Sabi  
 Basalt\_NG05\_Miyu

### Group G



Karma\_CL08\_CLAY  
 Greenish\_NG07\_Kazuki  
 Mix\_NG07 + NG05\_Kazuki

### Group H



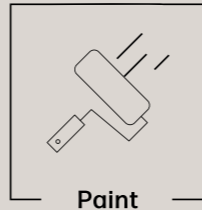
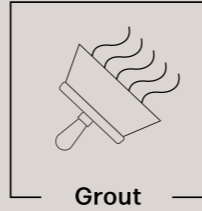
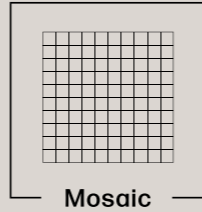
Trust\_CL07\_CLAY  
 Crayon\_NG01\_Ami  
 Mix\_NG01 + NG02 + NG03\_Miyu



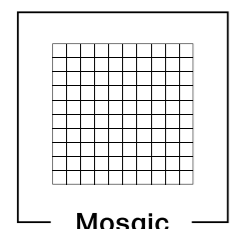


# Grouts & Paints line

# The perfect total look solution



**Matchings dashboard**



Mosaic



**Crayon**  
NG 01



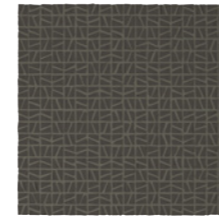
**Sand**  
NG 02



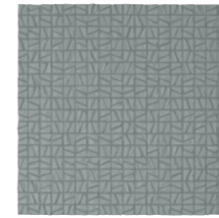
**Fog**  
NG 03



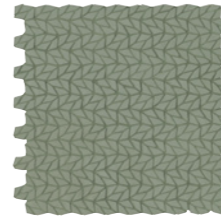
**Soot**  
NG 04



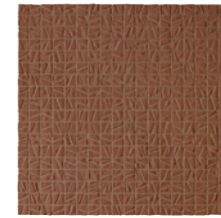
**Basalt**  
NG 05



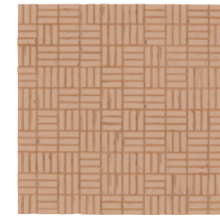
**Dove**  
NG 06



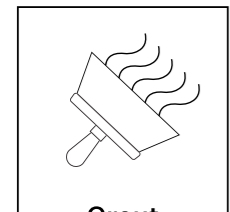
**Greenish**  
NG 07



**Red Earth**  
NG 08



**Pale**  
NG 09



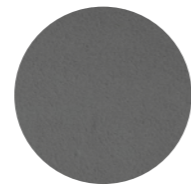
Grout



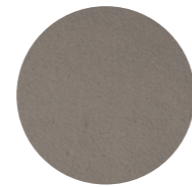
**Tofu | grout**



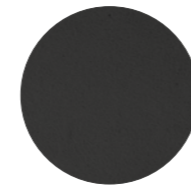
**Vanilla | grout**



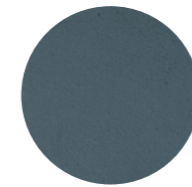
**Lunar | grout**



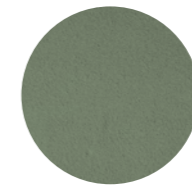
**Cider | grout**



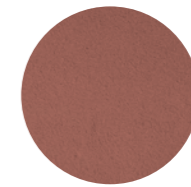
**Ironside | grout**



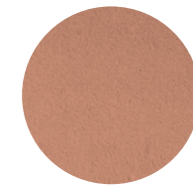
**Arctic | grout**



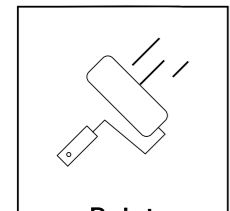
**Seagrass | grout**



**Sunburn | grout**



**Tuscany | grout**



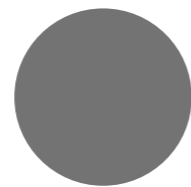
Paint



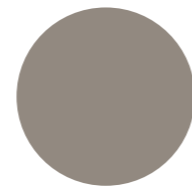
**Tofu | paint**



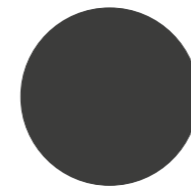
**Vanilla | paint**



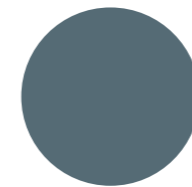
**Lunar | paint**



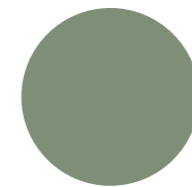
**Cider | paint**



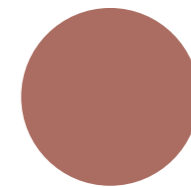
**Ironside | paint**



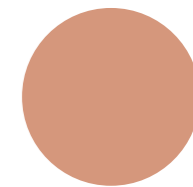
**Arctic | paint**



**Seagrass | paint**









**Sunburn | paint**



**Tuscany | paint**

## Summary of sizes and packaging

Riassuntivo formati e imballi

	 <b>Sabi</b>	 <b>Riku</b>	 <b>Kazuky</b>	 <b>Miyu</b>	 <b>Ami</b>
<b>NG01 Crayon</b>	BX03	BXP8	BX08	BXP3	BXQ3
<b>NG02 Sand</b>	BX04	BXP9	BX09	BXP4	BXQ4
<b>NG03 Fog</b>	BX05	BXQ0	BXP0	BXP5	BXQ5
<b>NG04 Soot</b>	BX06	BXQ1	BXP1	BXP6	BXQ6
<b>NG05 Basalt</b>	BX07	BXQ2	BXP2	BXP7	BXQ7
<b>NG06 Dove</b>	BYC8	-	-	BYD2	-
<b>NG07 Greenish</b>	-	-	BYD0	-	-
<b>NG08 Red Earth</b>	BYC9	BYD4	-	-	-
<b>NG09 Pale</b>	-	BYD5	-	-	BYD7
<b>NG07 + NG05</b>	-	-	BYD1	-	-
<b>NG08 + NG09</b>	-	BYD6	-	-	-
<b>NG01 + NG02 + NG03</b>	-	-	-	BYD3	-
 pz/scatola pcs/box	10	10	10	10	10

## Laying and cleaning suggestions

Suggerimenti di posa e pulizia

Nagomi is a collection obtained through casting, using an industrial process but also involving human intervention. The nature of its composition and the production process make each tile different from the others in terms of light reflection and tonal nuances. Additionally, small surface imperfections are a characteristic of this collection and should not be considered defects.

### Installation and cleaning instructions

Nagomi is a collection suitable exclusively for wall cladding. Epoxy grout must be used for material installation. For post-installation and routine cleaning, traditional products suitable for porcelain stoneware can be used, while for any grease stains, the use of alcohol-based degreasers is recommended.

Nagomi è una collezione ottenuta tramite colaggio, attraverso un processo industriale ma che prevede anche l'intervento umano. La natura della sua composizione ed il processo produttivo rendono ogni tessera diversa dalle altre in termini di riflessione della luce e di sfumature tono su tono. Inoltre, le piccole imperfezioni superficiali sono una peculiarità di questa collezione e non sono da considerarsi una difettologia.

### Istruzioni per la posa e la pulizia

Nagomi è una collezione adatta esclusivamente per applicazione a rivestimento. Per la posa del materiale è necessario utilizzare stucco epossidico. Per la pulizia post-posa e ordinaria possono essere utilizzati i tradizionali prodotti adatti per il gres porcellanato, mentre per eventuali macchie di unto si consiglia l'utilizzo di sgrassatori alcolici.



**GRANITI VICENTIA**  
GROUP

2135 State Highway 6 South  
Houston, Texas 77077

Phone: +1 713-869-0800

---

[www.granitivicentia.com](http://www.granitivicentia.com)  
[info@granitivicentia.com](mailto:info@granitivicentia.com)



**GRANITI VICENTIA**  
GROUP



**GRANITI VICENTIA**  

---

**GROUP**