

# New Marmi

Packaging Information - New Marmi



Size	Box Pieces	Box Sq/Ft	Pallet Boxes	Pallet Sq/Ft	Thickness mm	Weight Lbs/SF
<b>Honed &amp; Polished</b>						
24 x 24	4	15.834	30	475.02	9	4.55
18 x 18	6	13.313	52	692.276	9	4.55
12 x 24	6	15.751	32	504.03	9	4.55
12 x 12	11	10.772	48	517.056	9	4.55
<b>Mosaics</b>						
Mosaic (on 12 x 12 sheet)	5	4.896	-	-	-	3.65
<b>Trims</b>						
3 x 12 Bullnose	33	7.994	-	-	-	.95
3 x 12 Double Bullnose L	33	7.994	-	-	-	.95
3 x 12 Double Bullnose R	33	7.994	-	-	-	.95

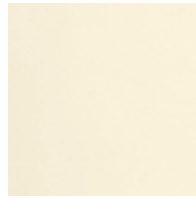
**Honed & Polished  
Sizes\***



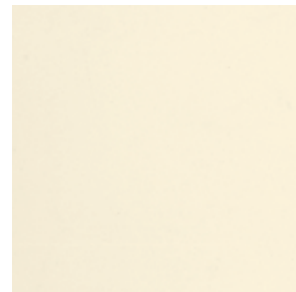
**TNM05H24** Honed  
**TNM05P24** Polished  
24" x 24"



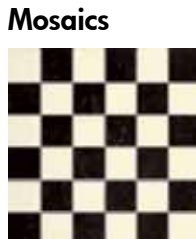
**TNM05H124** Honed  
**TNM05P124** Polished  
12" x 24"



**TNM05H12** Honed  
**TNM05P12** Polished  
12" x 12"

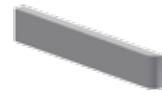


**TNM05H18** Honed  
**TNM05P18** Polished  
18" x 18"



**Mosaics**  
**TNM05H12MO** Honed  
**TNM05P12MO** Polished  
2" x 2" mesh mounted on 12" x 12" sheet

**Trim Pieces**



Honed  
**TNM05H312B**  
3" x 12" Bullnose  
**TNM65H312B**  
3" x 12" Double Bullnose L  
**TNM35H312B**  
3" x 12" Double Bullnose R

Polished  
**TNM05P312B**  
3" x 12" Bullnose  
**TNM65P312B**  
3" x 12" Double Bullnose L  
**TNM35P312B**  
3" x 12" Double Bullnose R

\*Sizes are nominal. For patterns with running bond/brick joint patterns, Fiandre recommends a maximum of 33% offset.

V2



Honed  
COF  
Dry  $\geq 0.75$   
Wet  $\geq 0.60$



New Marmi  
**Partenon**





**Honed & Polished  
Sizes\***



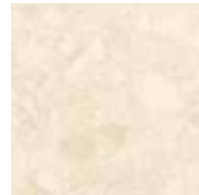
**TNM01H24** Honed  
**TNM01P24** Polished  
24" x 24"



**TNM01H18** Honed  
**TNM01P18** Polished  
18" x 18"



**TNM01H124** Honed  
**TNM01P124** Polished  
12" x 24"



**TNM01H12** Honed  
**TNM01P12** Polished  
12" x 12"

**Trim Pieces**



Honed  
**TNM01H312B**  
3" x 12" Bullnose  
**TNM61H312B**  
3" x 12" Double Bullnose L  
**TNM31H312B**  
3" x 12" Double Bullnose R

Polished  
**TNM01P312B**  
3" x 12" Bullnose  
**TNM61P312B**  
3" x 12" Double Bullnose L  
**TNM31P312B**  
3" x 12" Double Bullnose R

\*Sizes are nominal. For patterns with running bond/brick joint patterns, Fiandre recommends a maximum of 33% offset.

V2



Honed  
COF  
Dry  $\geq 0.75$   
Wet  $\geq 0.60$



New Marmi

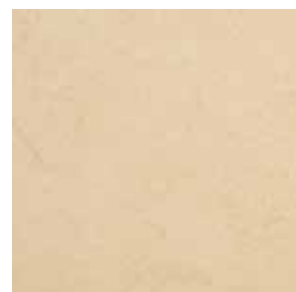
**Olympia**



**Honed & Polished  
Sizes\***



**TNM02H24** Honed  
**TNM02P24** Polished  
24" x 24"



**TNM02H18** Honed  
**TNM02P18** Polished  
18" x 18"



**TNM02H124** Honed  
**TNM02P124** Polished  
12" x 24"



**TNM02H12** Honed  
**TNM02P12** Polished  
12" x 12"

**Trim Pieces**



Honed  
**TNM02H312B**  
3" x 12" Bullnose  
**TNM62H312B**  
3" x 12" Double Bullnose L  
**TNM32H312B**  
3" x 12" Double Bullnose R

Polished  
**TNM02P312B**  
3" x 12" Bullnose  
**TNM62P312B**  
3" x 12" Double Bullnose L  
**TNM32P312B**  
3" x 12" Double Bullnose R

\*Sizes are nominal. For patterns with running bond/brick joint patterns, Fiandre recommends a maximum of 33% offset.

V2

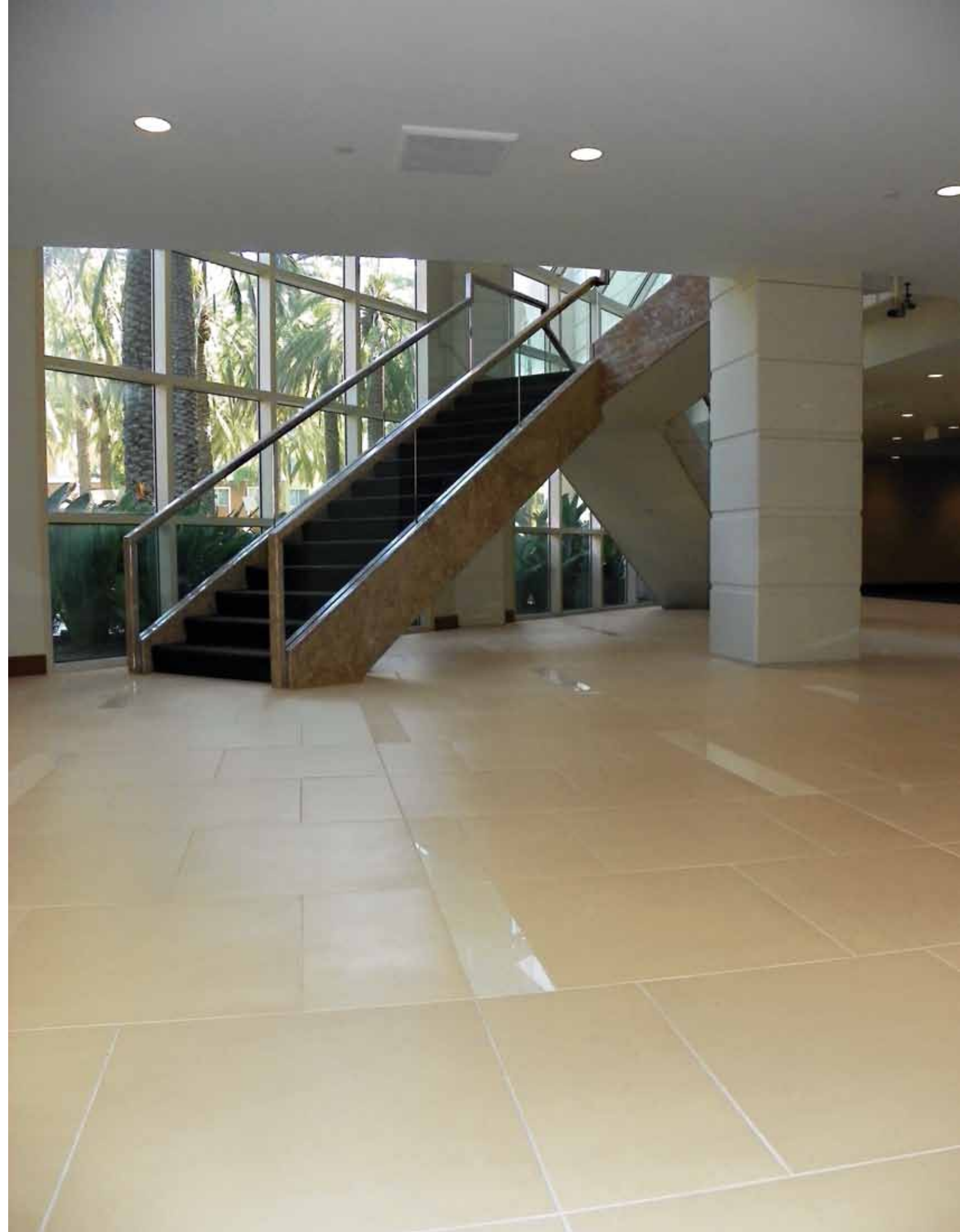


Honed  
COF  
Dry  $\geq 0.75$   
Wet  $\geq 0.60$



New Marmi

**Tumwater**



**Honed & Polished  
Sizes\***



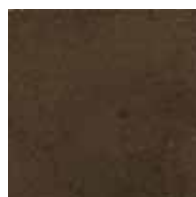
**TNM03H24** Honed  
**TNM03P24** Polished  
24" x 24"



**TNM03H124** Honed  
**TNM03P124** Polished  
12" x 24"



**TNM03H18** Honed  
**TNM03P18** Polished  
18" x 18"



**TNM03H12** Honed  
**TNM03P12** Polished  
12" x 12"

**Trim Pieces**



Honed

**TNM03H312B**

3" x 12" Bullnose

**TNM63H312B**

3" x 12" Double Bullnose L

**TNM33H312B**

3" x 12" Double Bullnose R

Polished

**TNM03P312B**

3" x 12" Bullnose

**TNM63P312B**

3" x 12" Double Bullnose L

**TNM33P312B**

3" x 12" Double Bullnose R

\*Sizes are nominal. For patterns with running bond/brick joint patterns, Fiandre recommends a maximum of 33% offset.

V2



Honed  
COF  
Dry  $\geq 0.75$   
Wet  $\geq 0.60$

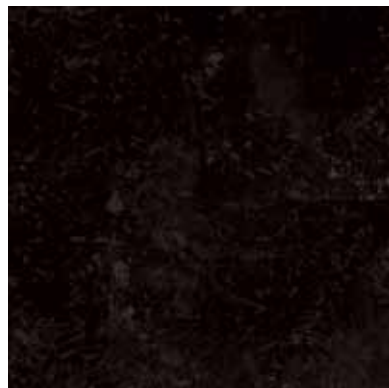


New Marmi

**Cascadia**



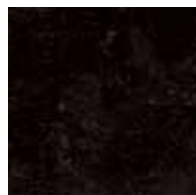
**Honed & Polished  
Sizes\***



**TNM06H24** Honed  
**TNM06P24** Polished  
24" x 24"



**TNM06H124** Honed  
**TNM06P124** Polished  
12" x 24"

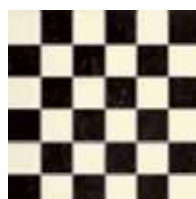


**TNM06H12** Honed  
**TNM06P12** Polished  
12" x 12"



**TNM06H18** Honed  
**TNM06P18** Polished  
18" x 18"

**Mosaics**



**TNM05H12MO** Honed  
**TNM05P12MO** Polished  
2" x 2" mesh mounted on 12" x 12" sheet






**Trim Pieces**



Honed  
**TNM06H312B**  
3" x 12" Bullnose  
**TNM66H312B**  
3" x 12" Double Bullnose L  
**TNM36H312B**  
3" x 12" Double Bullnose R

Polished  
**TNM06P312B**  
3" x 12" Bullnose  
**TNM66P312B**  
3" x 12" Double Bullnose L  
**TNM36P312B**  
3" x 12" Double Bullnose R

\*Sizes are nominal. For patterns with running bond/brick joint patterns, Fiandre recommends a maximum of 33% offset.

V2   Honed COF Dry ≥ 0.75 Wet ≥ 0.60   

New Marmi

# Toros Black

