

# TriBeCa



**MIRAGE**<sup>®</sup>  
Ceramics . Design . Sustainability

# BLENDING STONE

## TriBeCa

TRIBECA E' IL PRIMO PROGETTO DI CREATIVE BLEND DESIGN MADE IN MIRAGE®. UN PROGETTO CHE PRENDE ISPIRAZIONE DA UNA DELLE PIU' INTERESSANTI CORRENTI CREATIVE DEL DESIGN E CHE MIRA A BILANCIARE E COMBINARE METODOLOGIE E MATERIALI DIVERSI, GENERANDO CATEGORIE DI PRODOTTI NUOVI E SEMPRE PIU' RICERCATI.

PRODOTTI CHE ESALTINO GLI ELEMENTI DISTINTIVI DEI SOGGETTI DI RIFERIMENTO ORIGINALI, CHE SUPERINO IL CONCETTO DI "SELEZIONE LIMITATA" ED ARRIVINO AD IDENTIFICARE I RIFERIMENTI ESTETICI PIU' INTERESSANTI, TRADUCENDOLI IN UN NUOVO PRODOTTO ALTERNATIVO. UNA VERA E PROPRIA SUBLIMAZIONE DELLA STRUTTURA E DEL COLORE AL FINE DI NOBILITARE GLI OGGETTI, DA QUELLI PIU' ORDINARI A QUELLI PIU' HI-TECH.



watts TB 01 pag. 46



harrison TB 02 pag. 47



hudson TB 03 pag. 48



greenwich TB 04 pag. 49



broadway TB 05 pag. 50

TRIBECA IS THE FIRST OF "CREATIVE BLEND DESIGN" PROJECT MADE IN MIRAGE®. THAT TAKES INSPIRATION FROM ONE OF THE MOST INTERESTING CREATIVE DESIGN CURRENTS AND FOCUSES ON BLENDING AND COMBINING DIFFERENT METHODS AND MATERIALS, GENERATING NEW AND SOUGHT-AFTER PRODUCTS. PRODUCTS EXALTING THE DISTINCTIVE TRAITS OF THE ORIGINAL SUBJECTS, OVERCOMING THE CONCEPT OF "LIMITED SELECTION" AND ABLE TO IDENTIFY THE MOST APPEALING AESTHETIC ELEMENTS CHANGING THEM INTO A TOTALLY INNOVATIVE PRODUCT. A VERITABLE SUBLIMATION OF THE TEXTURE AND COLOUR IN ORDER TO ENHANCE OBJECTS, FROM ORDINARY TO HI-TECH ONES.

TRIBECA IST DAS ERSTE PROJEKT VON «CREATIVE DESIGN BLEND» MADE BY MIRAGE®. EIN PROJEKT, DAS VOM INTERESSANTESTEN AKTUELLEN DESIGN INSPIRIERT IST MIT DEM ZIEL VERSCHIEDENE METHODEN UND MATERIALIEN AUSZUBALANCIEREN UND ZU KOMBINIEREN, WOBEI NEUE UND IMMER RAFFINIERTERE PRODUKTKATEGORIEN GESCHAFFEN WERDEN. PRODUKTE, DIE DIE BESONDERHEITEN DES URSPRÜNGLICHEN REFERENZMATERIALS HERVORHEBEN UND DAS KONZEPT DER «BEGRENZTEN AUSWAHL» ÜBERWINDEN, UM DIE INTERESSANTESTEN ÄSTHETISCHEN BEZÜGE ZU IDENTIFIZIEREN UND SIE IN NEUE, ALTERNATIVE PRODUKTE UMZUSETZEN. HIERBEI SUBLIMIEREN SICH STRUKTUR UND FARBE, WELCHE SÄMTLICHE OBJEKTE, VON DEN EINFACHSTEN BIS ZU DEN HOCH-TECHNOLOGISCHEN, VEREDELN.

TRIBECA EST LE PREMIER PROJET "CREATIVE BLEND DESIGN" MADE IN MIRAGE®. UN PROJET QUI S'INSPIRE DE L'UN DES COURANTS CRÉATIFS DU DESIGN LES PLUS INTÉRESSANTS ET QUI VISE À ÉQUILIBRER ET ASSOCIER DES MÉTHODES ET DES MATÉRIAUX DIFFÉRENTS, EN GÉNÉRANT DES CATÉGORIES DE PRODUITS NOUVEAUX ET TOUJOURS PLUS RECHERCHÉS. DES PRODUITS QUI METTENT EN VALEUR LES ÉLÉMENTS DISTINCTIFS DES SUJETS DE RÉFÉRENCE ORIGINAUX, QUI DÉPASSENT LE CONCEPT DE « SÉLECTION LIMITÉE » ET ARRIVENT À IDENTIFIER LES RÉFÉRENCES ESTHÉTIQUES LES PLUS INTÉRESSANTES, EN LES TRADUISANT EN UN NOUVEAU PRODUIT ALTERNATIF. UNE VÉRITABLE SUBLIMATION DE LA STRUCTURE ET DE LA COULEUR DONT L'OBJECTIF EST DE MAGNIFIER TOUS LES OBJETS : DES OBJETS ORDINAIRES AUX OBJETS PLUS HIGH TECH.

TRIBECA ES EL PRIMER PROYECTO DE "CREATIVE BLEND DESIGN" MADE IN MIRAGE®. UN PROYECTO QUE SE INSPIRA EN UNA DE LAS MÁS INTERESANTES CORRIENTES CREATIVAS DEL DISEÑO Y QUE MIRA A EQUILIBRAR Y COMBINAR METODOLOGÍAS Y MATERIALES DIFERENTES, GENERANDO CATEGORÍAS DE PRODUCTOS NUEVOS Y SIEMPRE MÁS SOFISTICADOS. PRODUCTOS QUE DESTAQUEN LOS ELEMENTOS DISTINTIVOS DE LOS SUJETOS DE REFERENCIA ORIGINALES, QUE SUPEREN EL CONCEPTO DE "SELECCIÓN LIMITADA" Y QUE LLEGUEN A IDENTIFICAR REFERENCIAS ESTÉTICAS MÁS INTERESANTES, TRADUCIÉNDOLAS EN UN NUEVO PRODUCTO ALTERNATIVO. UNA VERDADERA SUBLIMACIÓN DE LA ESTRUCTURA Y DEL COLOR PARA ENNOBLECER LOS OBJETOS, DE LOS MÁS COTIDIANOS A LOS MÁS HI-TECH.

TRIBECA – ЭТО ПЕРВЫЙ ПРОЕКТ "CREATIVE BLEND DESIGN" ОТ MIRAGE®. ПРОЕКТ ВДОХНОВЛЁН ОДНИМ ИЗ САМЫХ ИНТЕРЕСНЫХ НАПРАВЛЕНИЙ В ДИЗАЙНЕ И, КОМБИНИРУЯ РАЗНЫЕ ТЕХНИКИ И МАТЕРИАЛЫ, ДАЁТ ЖИЗНЬ НОВЫМ, НЕОБЫЧНО ОРИГИНАЛЬНЫМ ИЗДЕЛИЯМ. ТАКИМ, КОТОРЫЕ ЭФФЕКТНО ВЫДЕЛЯЮТ ХАРАКТЕРНЫЕ ОСОБЕННОСТИ ИСХОДНЫХ ПРИРОДНЫХ ОБРАЗЦОВ И СМЕТАЮТ НАПРОЧЬ ПОНЯТИЕ "ОГРАНИЧЕННОГО ВЫБОРА". ТАКИМ, КОТОРЫЕ СВОЕЙ ПРЕВОСХОДНОЙ ТЕКСТУРОЙ И РОСКОШНЫМ ЦВЕТОМ ОБЛАГОРАЖИВАЮТ ЛЮБЫЕ ОКРУЖАЮЩИЕ ИХ ПРЕДМЕТЫ, ОТ ТРАДИЦИОННЫХ ДО ВЫСОКОТЕХНОЛОГИЧНЫХ.

## 2 SUPERFICI 8 FORMATI 5 COLORI

2 SURFACES\_8 SIZES\_5 COLOURS

2 OBERFLÄCHEN\_8 FORMATE\_5 FARBEN

2 SURFACES\_8 FORMATS\_5 COULEURS

2 SUPERFICIES\_8 FORMATOS\_5 COLORES

2 ПОВЕРХНОСТИ\_8 ФОРМАТА\_5 ЦВЕТОВ

# TriBeCa



TB 01



TB 02



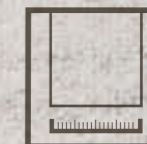
TB 03



TB 04



TB 05



**MONOCALIBRO**  
Single work-size  
In einem Werkmass  
Monocalibre  
Monocalibre  
Монокалиберный



**SQUADRATO E RETTIFICATO**  
Squared and rectified  
Rechtwinklig und geschliffen  
équarri et rectifié  
Esquadado y rectificado  
Квадратный и шлифованный



**COLORATO NELLA MASSA**  
Full-body coloured  
In der Masse gefärbt  
Coloré dans la masse  
Coloreado en la masa  
Окрашенный в массе



Hudson **TB 03** 60x120/24"x48" NAT SQ - 30x120/12"x48" NAT SQ  
Mattoncino Hudson **TB 03** 30x30/12"x12" NAT  
Gradino B Hudson **TB 03** 33x120/13"x48" NAT

**TRIBECA E' PROPOSTA IN CINQUE TONALITA' NATURALI: WATTS, HARRISON, HUDSON, GREENWICH E BROADWAY, DECLINAZIONI CROMATICHE CHE RISPONDONO ALLE ESIGENZE PROGETTUALI DEL PROGETTISTA MODERNO, ATTENTAMENTE BILANCIATE TRA TONALITA' CALDE E FREDE.**

**hudson TB 03**



TRIBECA IS AVAILABLE IN FIVE NATURAL SHADES: WATTS, HARRISON, HUDSON, GREENWICH AND BROADWAY, CHROMATIC HUES THAT MEET THE NEEDS OF TODAY'S PLANNERS AND DESIGNERS, CAREFULLY BALANCED IN WARM AND COLD TINTS.

TRIBECA IST IN FÜNF NATÜRLICHEN FARBEN ERHÄLTICH: WATTS, HARRISON, HUDSON, GREENWICH UND BROADWAY; DEREN FARBLICHE ABWEICHUNGEN ERFÜLLEN MIT SORGFÄLTIGER AUSGEWOGENHEIT VON WARMEN UND KALTEN FARBTÖNEN DIE GESTALTUNGSANFORDERUNGEN MODERNER DESIGNER.

TRIBECA EST PROPOSÉE EN CINQ TEINTES NATURELLES: WATTS, HARRISON, HUDSON, GREENWICH ET BROADWAY : DES DÉCLINAISONS DE COULEURS QUI RÉPONDENT AUX BESOINS DE L'ARCHITECTURE MODERNE, SOIGNEUSEMENT ÉQUILIBRÉES ENTRE DES TONS CHAUDS ET FROIDS.

TRIBECA SE PRESENTA EN CINCO TONALIDADES NATURALES: WATTS, HARRISON, HUDSON, GREENWICH Y BROADWAY, DECLINACIONES CROMÁTICAS QUE RESPONDEN A LAS EXIGENCIAS DE DISEÑO DEL PROYECTISTA MODERNO, ATENTAMENTE BALANCEADAS ENTRE TONALIDADES CÁLIDAS Y FRÍAS.

КОЛЛЕКЦИЯ ТРИБЕСА ПРЕДЛОЖЕНА В ПЯТИ НАТУРАЛЬНЫХ ЦВЕТАХ: WATTS, HARRISON, HUDSON, GREENWICH И BROADWAY. ЭТО НЕОБЫКНОВЕННО СБАЛАНСИРОВАННАЯ ЦВЕТОВАЯ ПАЛИТРА, СОСТАВЛЕННАЯ ИЗ ТЁПЛЫХ И ХОЛОДНЫХ ОТТЕНКОВ И СПОСОБНАЯ ОТВЕТИТЬ САМЫМ ВЗЫСКАТЕЛЬНЫМ ТРЕБОВАНИЯМ СОВРЕМЕННЫХ ДИЗАЙНЕРОВ.



Hudson TB 03 60x120/24"x48" NAT SQ - 30x120/12"x48" NAT SQ



 hudson TB 03

Hudson **TB 03** 60x120/24"x48" NAT SQ - 30x120/12"x48" NAT SQ  
Mattoncino Hudson **TB 03** 30x30/12"x12" NAT



**TRIBECA E' IL RISULTATO DELLA COMBINAZIONE DI UN ACCURATA SELEZIONE DI RIFERIMENTI NATURALI DI PIETRE PREGIATE (COME LA JURA STONE, JERUSALEM STONE, SAMARCANDA, PIETRA LECCESE E LA PIERRE DE COMBLANCHIEN) IN UNA PERFETTA FUSIONE DELLE CARATTERISTICHE ESTETICHE TIPICHE DELLE PIETRE SEDIMENTARIE E CALCAREE, COME LE STRATIFICAZIONI, LE INCLUSIONI FOSSILI, LE VENATURE E LE ALTERNANZE GRANULOMETRICHE.**

**harrison TB 02**

TRIBECA IS THE RESULT OF A CAREFUL COMBINATION OF PRECIOUS NATURAL STONES (SUCH AS JURA STONE, JERUSALEM STONE, SAMARCANDA, LECCESE AND PIERRE DE COMBLANCHIEN) IN A PERFECT BLEND OF THE AESTHETIC FEATURES TYPICAL OF SEDIMENTARY AND CALCAREOUS STONES, SUCH AS LAYERING, FOSSIL INCLUSIONS, VEINING AND GRAINS.

TRIBECA IST DAS ERGEBNIS DER KOMBINATION VON SORGFÄLTIG AUSGEWÄHLTEN NATÜRLICHEN, HOCHWERTIGEN REFERENZSTEINEN (Z.B. JURA STONE, JERUSALEM STONE, SAMARCANDA, PIETRA LECCESE E LA PIERRE DE COMBLANCHIEN) MIT EINER PERFEKTER VERSCHMELZUNG DER TYPISCHEN ÄSTHETISCHEN MERKMALE DES SEDIMENT- UND KALKGESTEINS, WIE SCHICHTEN, FOSSILE EINSCHLÜSSE, ÄDERUNGEN UND UNTERSCHIEDLICHE KORNGRÖSSEN.

TRIBECA EST LE RÉSULTAT DE LA COMBINAISON D'UNE SÉLECTION SOIGNEUSE DE RÉFÉRENCES NATURELLES DE PIERRES DE QUALITÉ (COMME LA JURA STONE, LA JERUSALEM STONE, LA SAMARCANDA, LA PIETRA LECCESE ET LA PIERRE DE COMBLANCHIEN), EN UNE FUSION PARFAITE DES CARACTÉRISTIQUES ESTHÉTIQUES TYPIQUES DES PIERRES SÉDIMENTAIRES ET CALCAIRES, COMME LES STRATIFICATIONS, LES INCLUSIONS FOSSILES, LES VEINURES ET LES ALTERNANCES GRANULOMÉTRIQUES.

TRIBECA ES EL RESULTADO DE LA COMBINACIÓN DE UNA CUIDADOSA SELECCIÓN DE REFERENCIAS NATURALES DE PIEDRAS VALIOSAS (COMO LA JURA STONE, JERUSALEM STONE, SAMARCANDA, PIETRA LECCESE Y LA PIERRE DE COMBLANCHIEN) EN UNA PERFECTA FUSIÓN DE LAS CARACTERÍSTICAS ESTÉTICAS, TÍPICAS DE LAS PIEDRAS SEDIMENTARIAS Y CALCÁREAS, COMO LAS INCLUSIONES FÓSILES, LAS VETAS Y LAS VARIACIONES GRANULOMÉTRICAS.

TRIBECA – РЕЗУЛЬТАТ ТЩАТЕЛЬНОГО ОТБОРА ОБРАЗЦОВ НАТУРАЛЬНЫХ КАМНЕЙ (ОСАДОЧНЫХ ПОРОД И ИЗВЕСТНЯКОВ JURA STONE, JERUSALEM STONE, SAMARCANDA, PIETRA LECCESE, PIERRE DE COMBLANCHIEN) И ГАРМОНИЧНОГО СЛИЯНИЯ ИХ ВЕЛИКОЛЕПНЫХ ЭСТЕТИЧЕСКИХ ХАРАКТЕРИСТИК: СЛОИСТОСТИ, ИСКОПАЕМЫХ ВКЛЮЧЕНИЙ, ПРОЖИЛОК, ГРАНУЛОМЕТРИЧЕСКОЙ РАЗНОРОДНОСТИ.





Watts TB 01 30x120/12"x48" NAT SQ

**IL PROCESSO DI SELEZIONE DEI RIFERIMENTI NATURALI HA AVUTO COME OBIETTIVO QUELLO DI GENERARE UNA NUOVA ESTETICA CHE TRAESSE IL MEGLIO DA OGNI RIFERIMENTO LITOIDE, GENERANDO UNA VERSIONE "BLEND" IN GRES PORCELLANATO, NON CLASSIFICABILE NEL PANORAMA DELLE PIETRE NATURALI DI CAVA.**



**watts TB 01**

THE PROCESS OF SELECTION OF NATURAL REFERENCES HAD THE OBJECTIVE OF GENERATING A NEW AESTHETIC CONCEPT ABLE TO TAKE THE BEST FROM ANY LITHOIDAL ELEMENT, CREATING A "BLENDED" PORCELAIN STONEWARE VERSION THAT COULD NOT BE CLASSIFIED IN THE RANGE OF NATURAL QUARRY STONES.

DER AUSWAHLPROZESS DER NATÜRLICHEN REFERENZEN ZIELT AUF EINE NEUE ÄSTHETIK AB, DIE VON JEDEM REFERENZSTEIN DIE BESTEN MERKMALE ENTLIHT UND EINE «BLEND»-VERSION IN FEINSTEINZEUG SCHAFFT, DIE MIT DEN NATURSTEINEN AUS DEM STEINBRUCH NICHT KLASSIFIZIERBAR SIND.

LE PROCESSUS DE SÉLECTION DES RÉFÉRENCES NATURELLES SE FIXAIT L'OBJECTIF DE CRÉER UNE NOUVELLE ESTHÉTIQUE QUI EXTRAIE LE MEILLEUR DE CHAQUE RÉFÉRENCE LITHOÏDE, EN DONNANT VIE À UNE VERSION "BLEND" EN GRÈS CÉRAMÉ, IMPOSSIBLE À CLASSER SUR LE MARCHÉ DES PIERRES NATURELLES DE CARRIÈRE.

TRIBECA ES EL RESULTADO DE LA COMBINACIÓN DE UNA CUIDADOSA SELECCIÓN DE REFERENCIAS NATURALES DE PIEDRAS VALIOSAS (COMO LA JURA STONE, JERUSALEM STONE, SAMARCANDA, PIETRA LECCESE Y LA PIERRE DE COMBLANCHIEN) EN UNA PERFECTA FUSIÓN DE LAS CARACTERÍSTICAS ESTÉTICAS, TÍPICAS DE LAS PIEDRAS SEDIMENTARIAS Y CALCÁREAS, COMO LAS INCLUSIONES FÓSILES, LAS VETAS Y LAS VARIACIONES GRANULOMÉTRICAS.

ЦЕЛЬЮ ОТБОРА И ИЗУЧЕНИЯ КАМЕННЫХ ОБРАЗЦОВ БЫЛО НАЙТИ НОВУЮ ЭСТЕТИКУ, КОНЦЕНТРИРУЮЩУЮ ЛУЧШЕЕ, ЧТО ЕСТЬ В КАЖДОМ ИЗ НИХ, СОЗДАТЬ НОВЫЙ, КЕРАМОГРАНИТНЫЙ ВАРИАНТ КАМНЯ, В КОТОРОМ СОЕДИНЕНЫ РАЗНЫЕ КАЧЕСТВА ИСХОДНЫХ ПОРОД И КОТОРЫЙ НЕЛЬЗЯ НАЙТИ В ПРИРОДЕ.



Watts **TB 01** 30x120/12"x48" NAT SQ



life  
on the

0  
II

08  
07  
04

VI  
CAMERA

Handwritten text on a painting, possibly 'The End of the World'.

Abstract geometric artwork with black and white shapes.

Broadway TB 05 60x60/24"x24" NAT SQ  
Portnoy Hudson TB 03 30x30/12"x12" NAT



**CON IL PROGETTO TRIBECA MIRAGE® HA SELEZIONATO L'ESSENZA DI OGNI PIETRA NATURALE DI RIFERIMENTO, L'HA RIELABORATA E ARMONIZZATA REINTERPRETANDOLA INDUSTRIALMENTE IN GRES PORCELLANATO, GARANTENDO LE CARATTERISTICHE TECNICHE MECCANICHE, DI MANUTENZIONE E D'IMPIEGO PROPRIE DELLA CERAMICA MODERNA.**



**broadway TB 05**

WITH THE TRIBECA PROJECT, MIRAGE® HAS CAPTURED THE ESSENCE OF EVERY NATURAL STONE, HAS ELABORATED AND HARMONISED IT WITH AN INDUSTRIAL INTERPRETATION IN PORCELAIN STONEWARE, GUARANTEEING THE TECHNICAL MECHANICAL FEATURES AND THE MAINTENANCE REQUIREMENTS OF MODERN CERAMIC TILES.

MIT DEM PROJEKT TRIBECA HAT MIRAGE® DAS WESEN JEDES EINZELNEN NATURSTEINS AUSGEWÄHLT, ÜBERARBEITET UND HARMONISIERT UND IN INDUSTRIELLEM FEINSTEINZEUG NEU INTERPRETIERT, WOBEI DIE TECHNISCH-MECHANISCHEN EIGENSCHAFTEN, DIE PFLEGE UND DIE VERWENDUNG MODERNER KERAMIK GARANTIERT SIND.

AVEC LE PROJET TRIBECA MIRAGE® A SÉLECTIONNÉ L'ESSENCE DE CHAQUE PIERRE NATURELLE DE RÉFÉRENCE, L'A RÉÉLABORÉE ET HARMONISÉE EN LA RÉINTERPRÉTANT À ÉCHELLE INDUSTRIELLE DANS LE GRÈS CÉRAME, EN GARANTISSANT LES CARACTÉRISTIQUES TECHNIQUES ET MÉCANIQUES, D'ENTRETIEN ET D'EMPLOI PROPRES À LA CÉRAMIQUE MODERNE.

CON EL PROYECTO TRIBECA MIRAGE® HA SELECCIONADO LA ESENCIA DE CADA PIEDRA NATURAL DE REFERENCIA, LA HA RELABORADO Y ARMONIZADO REINTERPRETÁNDOLA INDUSTRIALMENTE COMO GRES PORCELÁNICO, GARANTIZANDO LAS CARACTERÍSTICAS TÉCNICO-MECÁNICAS, DE MANUTENCIÓN Y DE EMPLEO PROPIAS DE LA CERÁMICA MODERNA.

В ПРОЕКТЕ TRIBECA MIRAGE® ЗАКЛЮЧИЛА ЭСТЕТИЧЕСКУЮ СУТЬ КАЖДОЙ ОТОБРАННОЙ ПОРОДЫ И ДОПОЛНИЛА ЕЁ ТЕХНИЧЕСКИМИ, МЕХАНИЧЕСКИМИ, ЭКСПЛУАТАЦИОННЫМИ ХАРАКТЕРИСТИКАМИ, СВОЙСТВЕННЫМИ ЛУЧШЕМУ СОВРЕМЕННОМУ КЕРАМОГРАНИТУ.

hudson TB 03



Hudson TB 03 30x120/12"x48" NAT SQ  
Hydro Hudson TB 03 30x30/12"x12" NAT



Harrison TB 02 60x60/24"x24" NAT SQ  
Harrison TB 02 15x60/6"x24" NAT SQ



Harrison TB 02 60x60/24"x24" NAT SQ  
Harrison TB 02 15x60/6"x24" NAT SQ



**harrison TB 02**





Harrison TB 02 60x60/24"x24" NAT SQ  
Harrison TB 02 15x60/6"x24" NAT SQ





Watts TB 01 45x90/18"x36" - 30x120/12"x48" NAT SQ  
Greenwich TB 04 45x90/18"x36" NAT SQ



**watts TB 01 greenwich TB 04**



Watts **TB 01** 45x90/18"x36" - 30x120/12"x48" NAT SQ  
Greenwich **TB 04** 45x90/18"x36" NAT SQ





**TRIBECA E' DISPONIBILE NELLE SEGUENTI SUPERFICI E FORMATI: NATURALE (R9) NEI FORMATI 15X60, 30X60, 60X60, 45X45, 45X90, 30X120, 60X120 E 120X120. RIGATA, NEL FORMATO 30X60. SOLUZIONE IDEALE E VERSATILE IN CONTESTI OUTDOOR E' LA SUPERFICIE NATURALE IN SPESSORE 20 MILLIMETRI (SISTEMA EVO 2/E™), PREVISTA NEI FORMATI 45X90 E 60X60 IN TUTTI I COLORI.**



**watts TB 01**

TRIBECA IS AVAILABLE IN THE FOLLOWING SURFACES AND SIZES: NATURAL (R9) 15x60, 30x60, 60x60, 45x45, 45x90, 30x120, 60x120 AND 120x120 SIZES. RIGATA 30x60 SIZE. PERFECT AND VERSATILE SOLUTION FOR OUTDOOR APPLICATION IS THE NATURAL SURFACE WITH 20 MILLIMETRE THICKNESS (EVO\_2/E™ SYSTEM), AVAILABLE IN SIZES 45x90 AND 60x60.

TRIBECA IST IN FOLGENDEN FORMATEN UND OBERFLÄCHEN ERHÄLTlich: NATURALE (NATUR) (R9) IN DEN FORMATEN 15x60, 30x60, 60x60, 45x45, 45x90, 30x120, 60x120 UND 120x120. RIGATA, IM FORMAT 30x60. DIE NATUR OBERFLÄCHE IN EINER STÄRKE VON 20 MILLIMETERN (SYSTEM EVO\_2/E™) IST DIE IDEALE UND VIELSEITIGE LÖSUNG FÜR AUSSENBEREICHE, ERHÄLTlich IN DEN FORMATEN 45x90 UND 60x60.

TRIBECA EST DISPONIBLE DANS LES SURFACES ET FORMATS SUIVANTS: NATUREL (R9) DANS LES FORMATS 15x60, 30x60, 60x60, 45x45, 45x90, 30x120, 60x120 ET 120x120. RIGATA, DANS LE FORMAT 30x60. LA SOLUTION IDÉALE ET POLYVALENTE DANS DES CONTEXTES EXTÉRIEURS EST LA SURFACE NATURELLE DE 20 MM D'ÉPAISSEUR (SYSTÈME EVO\_2/E, DISPONIBLE DANS LES FORMATS 45x90 ET 60x60.

TRIBECA ESTÁ DISPONIBLE EN LAS SIGUIENTES SUPERFICIES Y FORMATOS: NATURAL (R9) EN LOS FORMATOS 15x60, 30x60, 60x60, 45x45, 45x90, 30x120, 60x120 Y 120x120. RIGATA, EN EL FORMATO 30x60. UNA SOLUCIÓN IDEAL Y VERSÁTIL PARA CONTEXTOS EXTERIORES ES REPRESENTADA POR LA SUPERFICIE NATURAL DE 20 MILÍMETROS DE ESPESOR (SISTEMA EVO\_2/E™), PREVISTA EN LOS FORMATOS 45x90 Y 60x60.

ПОВЕРХНОСТИ И ФОРМАТЫ TRIBECA: НАТУРАЛЬНАЯ (R9), ФОРМАТЫ 15x60, 30x60, 60x60, 45x45, 45x90, 30x120, 60x120 И 120x120; РИФЛЁНАЯ, ФОРМАТ 30x60. ОТЛИЧНЫМ И ФУНКЦИОНАЛЬНЫМ РЕШЕНИЕМ ДЛЯ НАРУЖНЫХ ПРОСТРАНСТВ ПРЕДСТАВЛЯЕТСЯ НАТУРАЛЬНАЯ ПЛИТКА ТОЛЩИНОЙ 20 МИЛЛИМЕТРОВ (СИСТЕМА EVO\_2/E™), КОТОРАЯ ДОСТУПНА В ФОРМАТАХ 45x90 И 60x60.



Watts **TB 01** 60x60/24"x24" NAT SQ - 30x120/12"x48" NAT SQ  
Pixel Watts **TB 01** 30x30/12"x12" NAT



Watts **TB 01** 60x60/24"x24" NAT SQ - 30x120/12"x48" NAT SQ  
Pixel Watts **TB 01** 30x30/12"x12" NAT

# FORMATI

Sizes Formate Formats Formatos Форматы

# PEZZI SPECIALI

Special pieces Sonderstücke Pièces spéciales Piezas especiales Пециальные зделя

120x120 / 48"x48" NAT SQ

60x120 / 24"x48" NAT SQ

30x120 / 12"x48" NAT SQ

45x45 / 18"x18" NAT SQ

Battiscopa 7,2x60 / 2<sup>7</sup>/<sub>8</sub>"x24" NAT

Battiscopa 4x60 / 1<sup>3</sup>/<sub>5</sub>"x24" NAT

60x60 / 24"x24" NAT SQ

Gradino B Angolare 33x33 / 13<sup>1</sup>/<sub>5</sub>"x13<sup>1</sup>/<sub>5</sub>" NAT

Gradino B 33x120 / 13<sup>1</sup>/<sub>5</sub>"x48" NAT

Gradino A 30x60 / 12"x24" NAT

30x60 / 12"x24" NAT SQ

30x60 / 12"x24" RG SQ

15x60 / 6"x24" NAT SQ

45x90 / 18"x36" NAT SQ

45x90 / 18"x36" NAT SQ  $\square$  20 mm

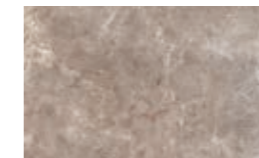
60x60 / 24"x24" NAT SQ  $\square$  20 mm



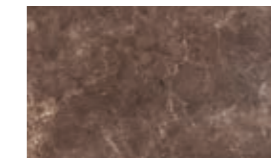
watts TB 01



harrison TB 02



hudson TB 03



greenwich TB 04



broadway TB 05

# COLORI

Colours Farben Couleurs Colores Цветов

watts TB 01



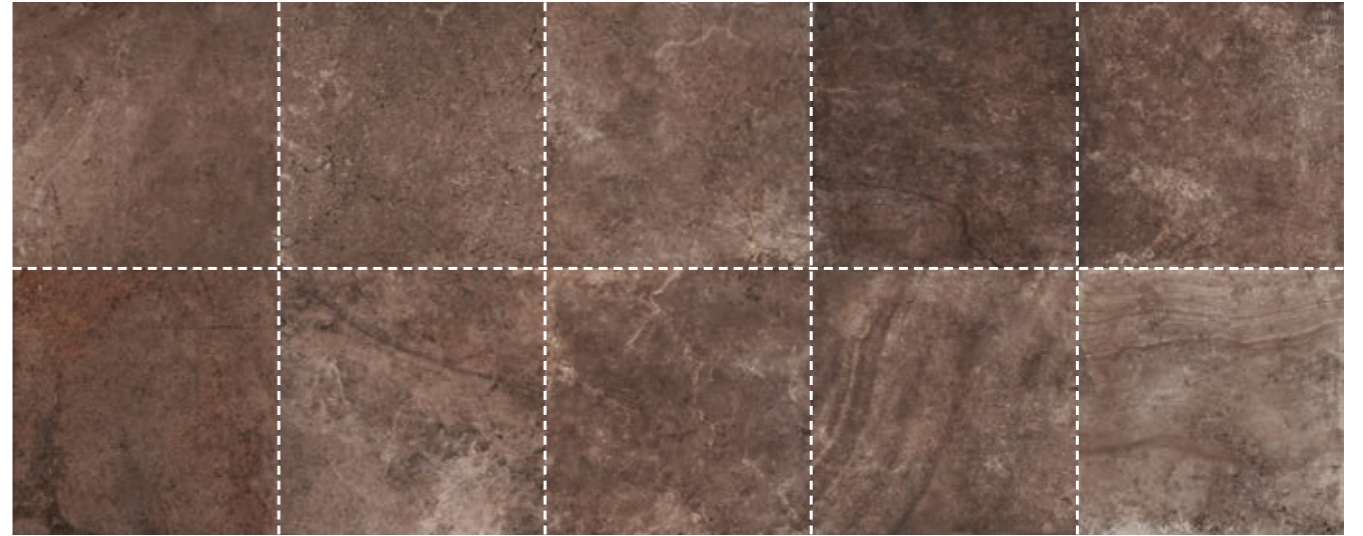
harrison TB 02



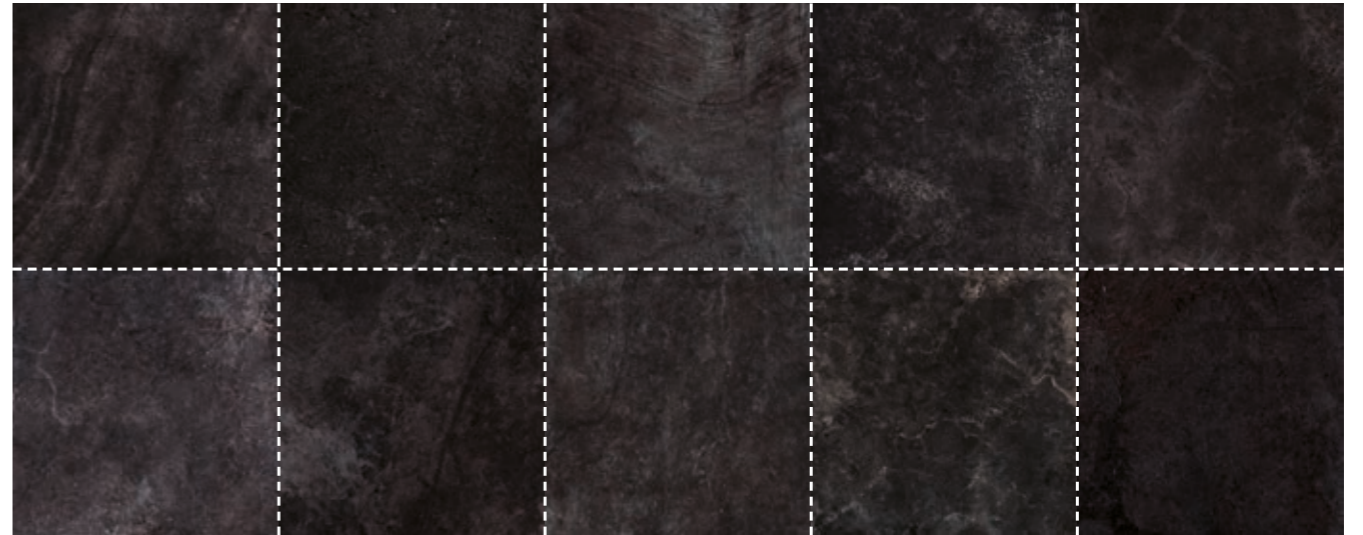
hudson TB 03



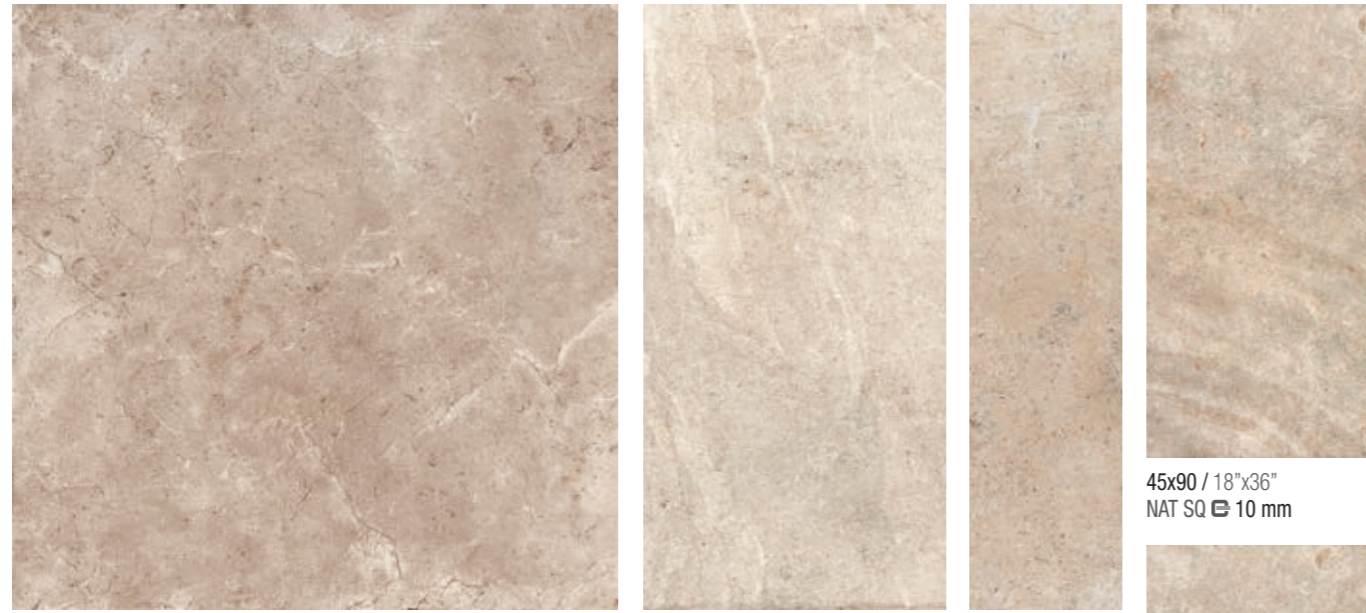
greenwich TB 04



broadway TB 05





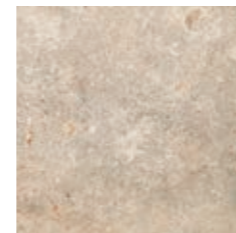


120x120 / 48"x48"  
NAT SQ  $\ominus$  9 mm

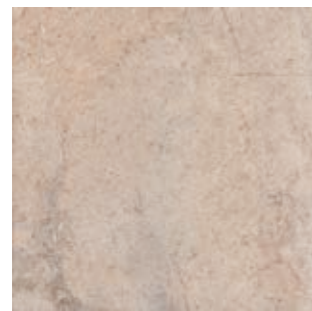
60x120 / 24"x48"  
NAT SQ  $\ominus$  10 mm

30x120 / 12"x48"  
NAT SQ  $\ominus$  10 mm

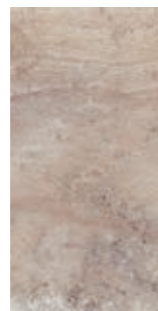
45x90 / 18"x36"  
NAT SQ  $\ominus$  10 mm



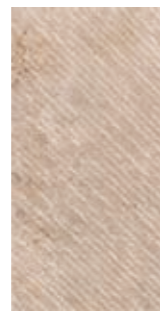
45x45 / 18"x18"  
NAT SQ  $\ominus$  9 mm



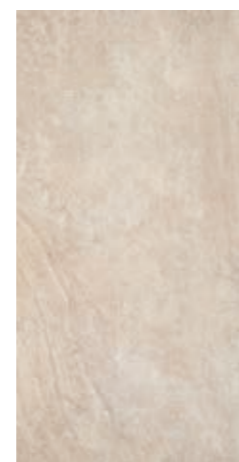
60x60 / 24"x24"  
NAT SQ  $\ominus$  10 mm



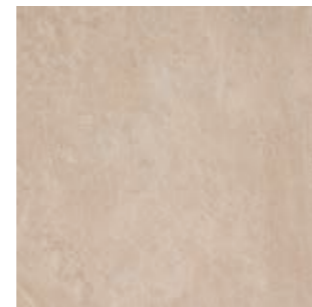
30x60 / 12"x24"  
NAT SQ  $\ominus$  10 mm



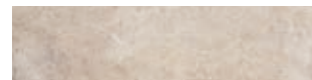
30x60 / 12"x24"  
RG SQ  $\ominus$  10 mm



45x90 / 18"x36"  
NAT SQ  $\ominus$  20 mm EVO\_2/E™



60x60 / 24"x24"  
NAT SQ  $\ominus$  20 mm EVO\_2/E™



15x60 / 6"x24"  
NAT SQ  $\ominus$  10 mm

## watts TB 01

**DECORI** Decors Dekore Decors Decoros Декоры



**TB 01 Hydro**  
30x30 / 12"x12" NAT



**TB 01 Portnoy**  
30x30 / 12"x12" NAT



**TB 01 Mattoncino**  
30x30 / 12"x12" NAT  
Tessere 2,4x4,8 / 1"x2"



**TB 01 Mosaico 36T**  
30x30 / 12"x12" NAT  
Tessere 4,8x4,8 / 2"x2"



**TB 01 Pixel**  
30x30 / 12"x12" NAT



**TB 01 Rift (3D)**  
10,5x45 / 4 1/5"x18" NAT

**HYDRO, PORTNOY, MATTONCINO, QUADRI, PIXEL:**

**Decoro su rete.** / Mesh-backed decoration. / Dekor auf netz. / Décor sur filet. / Decoración en red. / Декор в сети.

**NAT: Naturale** - Natural - Natur/unpoliert - Naturelle - Natural - Натуральный **RG: Rigata**

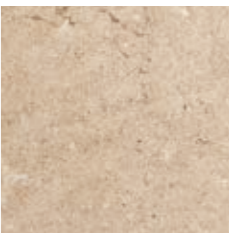


120x120 / 48"x48"  
NAT SQ  $\ominus$  9 mm

60x120 / 24"x48"  
NAT SQ  $\ominus$  10 mm

30x120 / 12"x48"  
NAT SQ  $\ominus$  10 mm

45x90 / 18"x36"  
NAT SQ  $\ominus$  10 mm



45x45 / 18"x18"  
NAT SQ  $\ominus$  9 mm



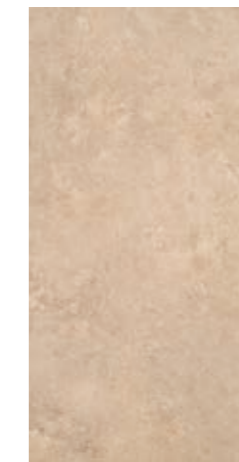
60x60 / 24"x24"  
NAT SQ  $\ominus$  10 mm



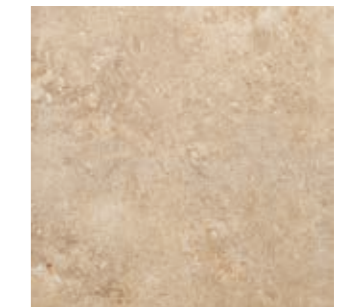
30x60 / 12"x24"  
NAT SQ  $\ominus$  10 mm



30x60 / 12"x24"  
RG SQ  $\ominus$  10 mm



45x90 / 18"x36"  
NAT SQ  $\ominus$  20 mm EVO\_2/E™



60x60 / 24"x24"  
NAT SQ  $\ominus$  20 mm EVO\_2/E™



15x60 / 6"x24"  
NAT SQ  $\ominus$  10 mm

## harrison TB 02

**DECORI** Decors Dekore Decors Decoros Декоры



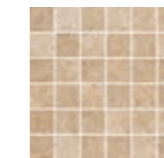
**TB 02 Hydro**  
30x30 / 12"x12" NAT



**TB 02 Portnoy**  
30x30 / 12"x12" NAT



**TB 02 Mattoncino**  
30x30 / 12"x12" NAT  
Tessere 2,4x4,8 / 1"x2"



**TB 02 Mosaico 36T**  
30x30 / 12"x12" NAT  
Tessere 4,8x4,8 / 2"x2"



**TB 02 Pixel**  
30x30 / 12"x12" NAT



**TB 02 Rift (3D)**  
10,5x45 / 4 1/5"x18" NAT

**HYDRO, PORTNOY, MATTONCINO, QUADRI, PIXEL:**

**Decoro su rete.** / Mesh-backed decoration. / Dekor auf netz. / Décor sur filet. / Decoración en red. / Декор в сети.

**NAT: Naturale** - Natural - Natur/unpoliert - Naturelle - Natural - Натуральный **RG: Rigata**



120x120 / 48"x48"  
NAT SQ  $\ominus$  9 mm

60x120 / 24"x48"  
NAT SQ  $\ominus$  10 mm

30x120 / 12"x48"  
NAT SQ  $\ominus$  10 mm



45x90 / 18"x36"  
NAT SQ  $\ominus$  10 mm



45x45 / 18"x18"  
NAT SQ  $\ominus$  9 mm



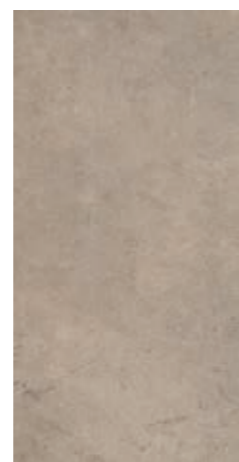
60x60 / 24"x24"  
NAT SQ  $\ominus$  10 mm



30x60 / 12"x24"  
NAT SQ  $\ominus$  10 mm



30x60 / 12"x24"  
RG SQ  $\ominus$  10 mm



45x90 / 18"x36"  
NAT SQ  $\ominus$  20 mm EVO\_2/E™



60x60 / 24"x24"  
NAT SQ  $\ominus$  20 mm EVO\_2/E™



15x60 / 6"x24"  
NAT SQ  $\ominus$  10 mm

## hudson TB 03

**DECORI** Decors Dekore Decors Decoros Декоры



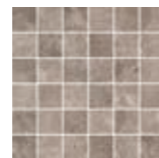
**TB 03 Hydro**  
30x30 / 12"x12" NAT



**TB 03 Portnoy**  
30x30 / 12"x12" NAT



**TB 03 Mattoncino**  
30x30 / 12"x12" NAT  
Tessere 2,4x4,8 / 1"x2"



**TB 03 Mosaico 36T**  
30x30 / 12"x12" NAT  
Tessere 4,8x4,8 / 2"x2"



**TB 03 Pixel**  
30x30 / 12"x12" NAT

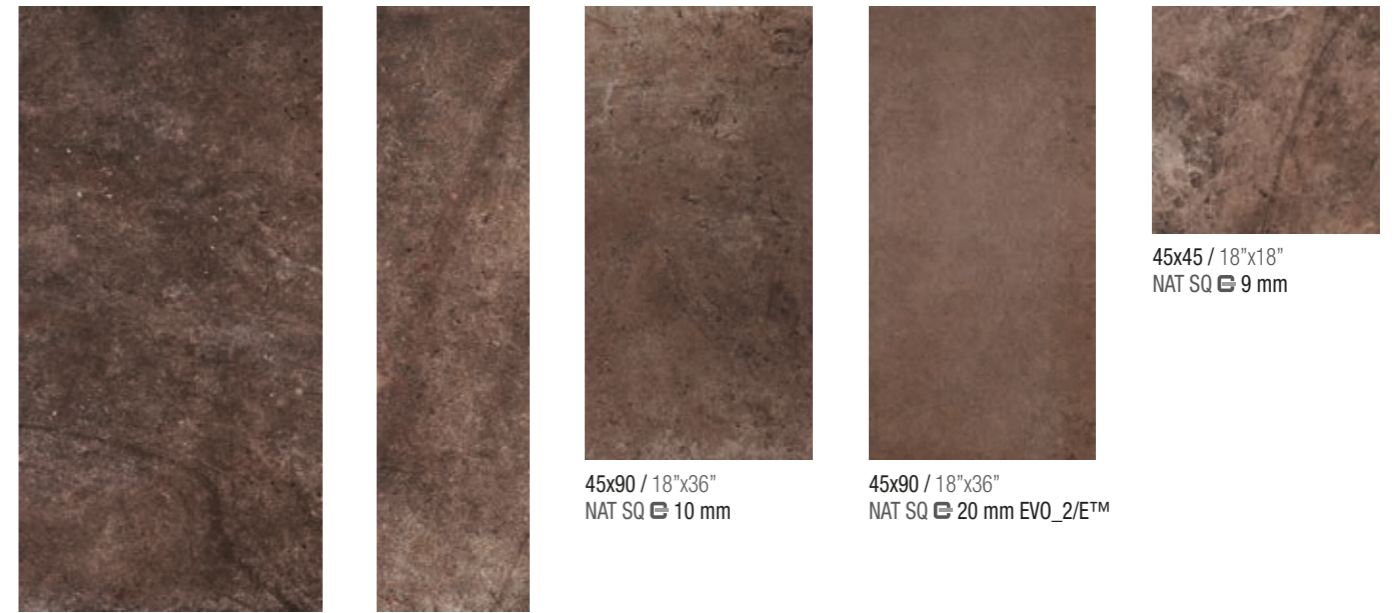


**TB 03 Rift (3D)**  
10,5x45 / 4 1/5"x18" NAT

**HYDRO, PORTNOY, MATTONCINO, QUADRI, PIXEL:**

**Decoro su rete.** / Mesh-backed decoration. / Dekor auf netz. / Décor sur filet. / Decoración en red. / Декор в сети.

**NAT:** Naturale - Natural - Natur/unpoliert - Naturelle - Natural - Натуральный **RG:** Rigata

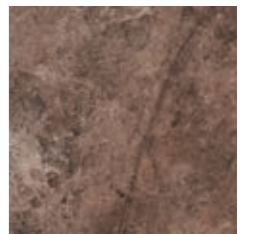


60x120 / 24"x48"  
NAT SQ  $\ominus$  10 mm

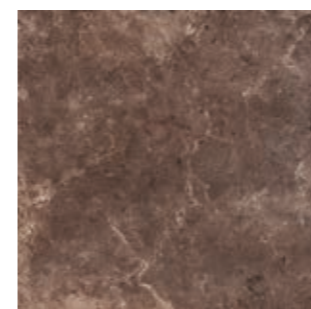
30x120 / 12"x48"  
NAT SQ  $\ominus$  10 mm

45x90 / 18"x36"  
NAT SQ  $\ominus$  10 mm

45x90 / 18"x36"  
NAT SQ  $\ominus$  20 mm EVO\_2/E™



45x45 / 18"x18"  
NAT SQ  $\ominus$  9 mm



60x60 / 24"x24"  
NAT SQ  $\ominus$  10 mm



60x60 / 24"x24"  
NAT SQ  $\ominus$  20 mm EVO\_2/E™



30x60 / 12"x24"  
NAT SQ  $\ominus$  10 mm



30x60 / 12"x24"  
RG SQ  $\ominus$  10 mm



15x60 / 6"x24"  
NAT SQ  $\ominus$  10 mm

## greenwich TB 04

**DECORI** Decors Dekore Decors Decoros Декоры



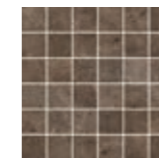
**TB 04 Hydro**  
30x30 / 12"x12" NAT



**TB 04 Portnoy**  
30x30 / 12"x12" NAT



**TB 04 Mattoncino**  
30x30 / 12"x12" NAT  
Tessere 2,4x4,8 / 1"x2"



**TB 04 Mosaico 36T**  
30x30 / 12"x12" NAT  
Tessere 4,8x4,8 / 2"x2"



**TB 04 Pixel**  
30x30 / 12"x12" NAT



**TB 04 Rift (3D)**  
10,5x45 / 4 1/5"x18" NAT

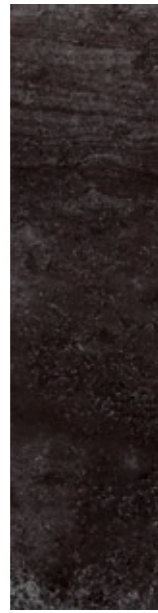
**HYDRO, PORTNOY, MATTONCINO, QUADRI, PIXEL:**

**Decoro su rete.** / Mesh-backed decoration. / Dekor auf netz. / Décor sur filet. / Decoración en red. / Декор в сети.

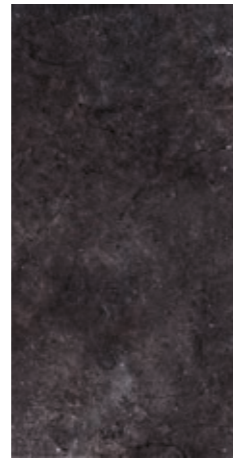
**NAT:** Naturale - Natural - Natur/unpoliert - Naturelle - Natural - Натуральный **RG:** Rigata



60x120 / 24"x48"  
NAT SQ ⊕ 10 mm



30x120 / 12"x48"  
NAT SQ ⊕ 10 mm



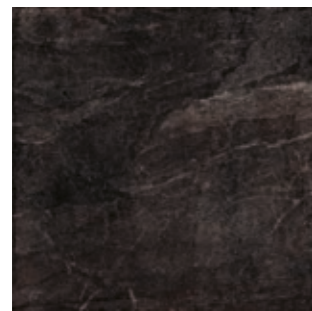
45x90 / 18"x36"  
NAT SQ ⊕ 10 mm



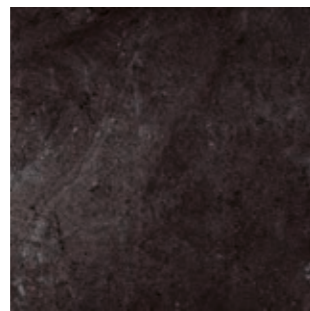
45x90 / 18"x36"  
NAT SQ ⊕ 20 mm EVO\_2/E™



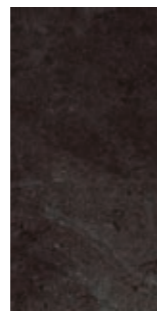
45x45 / 18"x18"  
NAT SQ ⊕ 9 mm



60x60 / 24"x24"  
NAT SQ ⊕ 10 mm



60x60 / 24"x24"  
NAT SQ ⊕ 20 mm EVO\_2/E™



30x60 / 12"x24"  
NAT SQ ⊕ 10 mm



30x60 / 12"x24"  
RG SQ ⊕ 10 mm



15x60 / 6"x24"  
NAT SQ ⊕ 10 mm

## broadway TB 05

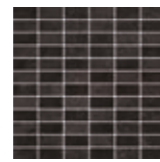
**DECORI** Decors Dekore Decors Decoros Декоры



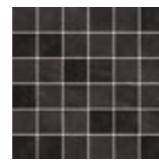
**TB 05 Hydro**  
30x30 / 12"x12" NAT



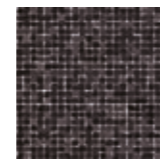
**TB 05 Portnoy**  
30x30 / 12"x12" NAT



**TB 05 Mattoncino**  
30x30 / 12"x12" NAT  
Tessere 2,4x4,8 / 1"x2"



**TB 05 Mosaico 36T**  
30x30 / 12"x12" NAT  
Tessere 4,8x4,8 / 2"x2"



**TB 05 Pixel**  
30x30 / 12"x12" NAT



**TB 05 Rift (3D)**  
10,5x45 / 4 1/5"x18" NAT

**HYDRO, PORTNOY, MATTONCINO, QUADRI, PIXEL:**

**Decoro su rete.** / Mesh-backed decoration. / Dekor auf netz. / Décor sur filet. / Decoración en red. / Декор в сети.

**NAT: Naturale** - Natural - Natur/unpoliert - Naturelle - Natural - Натуральный **RG: Rigata**

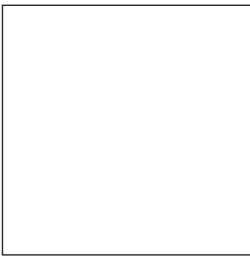










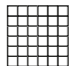

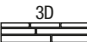


Harrison TB 02 45x90/18"x36" NAT SQ ⊕ 20 mm

# RIASSUNTIVO FORMATE IMBALLI




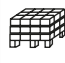
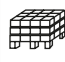
Summary of sizes and packaging Übersicht über Formate und Verpackungen

Récapitulatif formats et emballages Sinóptico de formatos y embalajes Форматах и упаковках

													
120x120 / 48"x48"	60x120 / 24"x48"	30x120 / 12"x48"	45x90 / 18"x36"	60x60 / 24"x24"	45x45 / 18"x18"	30x60 / 12"x24"	15x60 / 6"x24"	Mattoncino* 30x30 / 12"x12"	Portnoy* 30x30 / 12"x12"	Hydro* 30x30 / 12"x12"	Mosaico 36T* 30x30 / 12"x12"	Pixel* 30x30 / 12"x12"	3D Rift 10,5x45 / 4 1/5"x18"

FORMATI SIZES FORMATS FORMATE FORMATOS ФОРМАТЫ DECORI DECORS DEKORE DECOR DECOROS ДЕКОРЫ

SPESORE - THICKNESS	9 mm	10 mm	10 mm	10 mm	20 mm	10 mm	20 mm	9 mm	10 mm	10 mm							
SUPERFICIE - SURFACE	NAT SQ	NAT SQ	NAT SQ	NAT SQ	NAT SQ EVO 2.0™	NAT SQ	NAT SQ EVO 2.0™	NAT SQ	NAT SQ	RG SQ	NAT SQ	NAT	NAT	NAT	NAT	NAT	NAT
watts TB 01	SJ15	NX71	NX76	NX91	A	NX56	A	OB03	NY50	NY55	NX66	NZ43	NZ48	NZ57	SK29	NZ82	OA42
harrison TB 02	SJ16	NX72	NX77	NX92	OI43	NX57	A	OB04	NY51	NY56	NX67	NZ44	NZ49	NZ58	SK30	NZ83	OA43
hudson TB 03	SJ17	NX73	NX78	NX93	OI44	NX58	OJ80	OB05	NY52	NY57	NX68	NZ45	NZ50	NZ59	SK31	NZ84	OA44
greenwich TB 04	-	NX74	NX79	NX94	OI45	NX59	A	OB06	NY53	NY58	NX69	NZ46	NZ51	NZ60	SK32	NZ85	OA45
broadway TB 05	-	NX75	NX80	NX95	OI46	NX60	OJ81	OB07	NY54	NY59	NX70	NZ47	NZ52	NZ61	SK33	NZ86	OA46

	58,00	32,64	36,92	24,46	37,00	24,18	33,00	25,99	24,18	24,18	24,78	-	-	-	-	-	-
 <b>Peso lordo per scatola</b> Gross weight per box Bruttogewicht pro Karton Poids brut par boîte Peso bruto por caja Вес брутто коробки																	
 <b>Pezzi per scatola</b> Pieces for box Stück pro Karton Pièces pour boîte Piezas por caja Штук в коробке	2	2	4	3	2	3	2	6	6	6	12	6	10	6	6	6	14
 <b>mq. scatola</b> mq. box mq. Karton mq. boîte mq. caja кв.м в коробке	2,88	1,44	1,44	1,215	0,81	1,08	0,72	1,215	1,08	1,08	1,08	-	-	-	-	-	-
 <b>Scatole / full pallet</b> Boxes / full pallet Stück / volle Palette Pièces / palette complete Cajas / pallet completo Коробок в паллете	18	15	16	36	27	40	30	33	40	40	40	-	-	-	-	-	-
 <b>mq./pallet</b>	51,84	21,60	20,16	43,74	21,87	43,20	21,60	40,09	43,20	43,20	43,20	-	-	-	-	-	-

A: Disponibile. / Available. / Lieferbar. / Disponible. / Disponible. / Доступный.

Materiale rettificato e monocalibro. / Squared and monocaliber / Ware nachkalibriert und im monokaliber / Materiel rectifié et a un sol calibre / Material rectificado y monocalibre / Ректифицированный и однокалиберный материал во всех форматах и с любым типом поверхности.

Per mantenere la modularità è necessaria una fuga di 2 mm. La richiesta di posa modulare deve essere espressamente indicata nell'ordine. Si consiglia l'utilizzo di stucchi colorati in sintonia con i colori dei fondi. / To maintain modularity, the use of a 2 mm joint is required. The request for a modular tiling layout must be clearly stated in the order. We recommend the use of coloured grouts that match the background tiles. / Um die Modularität zu erhalten, muß man das Material auf eine Fuge von 2 mm beachten. Der Wunsch einer modularen Verlegung muss in der Bestellung ausdrücklich angegeben werden. Wir empfehlen die Verwendung von farbigen Fugenmassen, die farblich mit den Grundfliesen übereinstimmen. / Pour garder la modularité, il est nécessaire de réaliser un joint de 2 mm. La demande de pose modulaire doit être indiquée expressément au moment de la commande. Nous vous conseillons d'avoir recours à des produits de jointoiement colorés assortis aux couleurs des carreaux de fond. / Para seguir teniendo la modularidad es necesario hacer una junta de 2 mm. La petición de colocación modular deberá indicarse expresamente en el pedido. Se aconseja utilizar materiales coloreados para relleno de juntas que combinen bien con los colores de los azulejos de fondo. / Модульная укладка плитки должна выполняться со швом 2 мм. Необходимость модульной укладки должна быть четко указана в заказе. Рекомендуется использования цветной, сочетающейся с основным цветом плитки, замазки.

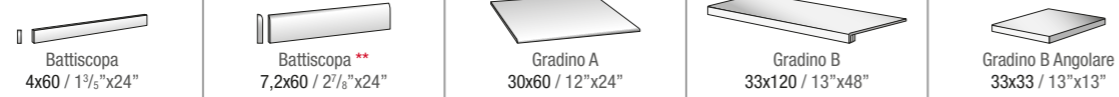
\* Decoro su rete. / Mesh-backed decoration. / Dekor auf Netz. / Décor sur filet. / Decoración en red. / Декор в сети.



NAT: Naturale - Natural - Natur/unpoliert - Naturelle - Natural - Натуральный  
RG: Rigata

# RIASSUNTIVO FORMATE E IMBALLI

Summary of sizes and packaging Übersicht über Formate und Verpackungen  
Récapitulatif formats et emballages Sinóptico de formatos y embalajes Форматах и упаковках



PEZZI SPECIALI SPECIAL PIECES SONDERSTÜCKE PIÈCES SPÉCIALES PIEZAS ESPECIALES ПЕЦИАЛЬНЫЕ ЗДЕЛИЯ

SUPERFICIE - SURFACE		NAT	NAT	NAT	NAT	NAT
	<b>watts TB 01</b>	<b>NZ87</b>	<b>0065</b>	<b>A</b>	<b>NZ95</b>	<b>0A00</b>
	<b>harrison TB 02</b>	<b>NZ88</b>	<b>0066</b>	<b>A</b>	<b>NZ96</b>	<b>0A01</b>
	<b>hudson TB 03</b>	<b>NZ89</b>	<b>0067</b>	<b>A</b>	<b>NZ97</b>	<b>0A02</b>
	<b>greenwich TB 04</b>	<b>NZ90</b>	<b>0068</b>	<b>A</b>	<b>NZ98</b>	<b>0A03</b>
	<b>broadway TB 05</b>	<b>NZ91</b>	<b>0069</b>	<b>A</b>	<b>NZ99</b>	<b>0A04</b>

	Peso lordo per scatola Gross weight per box Bruttogewicht pro Karton Poids brut par boîte Peso bruto por caja Вес брутто коробки	-	-	-	-	-
	Pezzi per scatola Pieces for box Stück pro Karton Pièces pour boîte Piezas por caja Штук в коробке	10	10	7	4	4
	mq. scatola mq. box mq. Karton mq. boîte mq. caja кв.м в коробке	-	-	-	-	-
	Scatole / full pallet Boxes / full pallet Stück / volle Palette Pièces / palette complete Cajas / pallet completo Коробки в палете	-	-	-	-	-
	mq./pallet	-	-	-	-	-

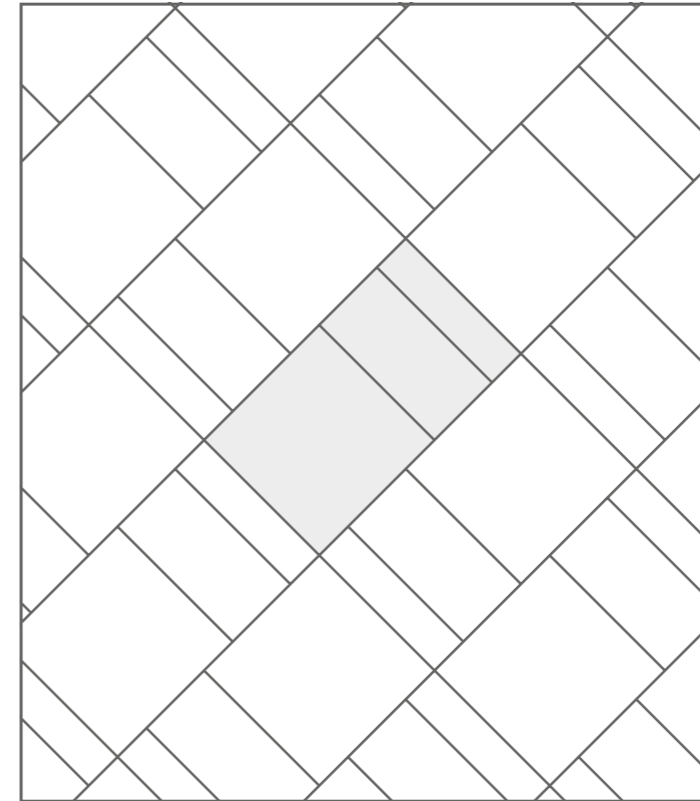
\*\* Finitura a becco di civetta / One-round edge shaping / Ausführung mit Eckabrundung / Façonage à bord rond / Acabado canto romo / Плитка с завалом



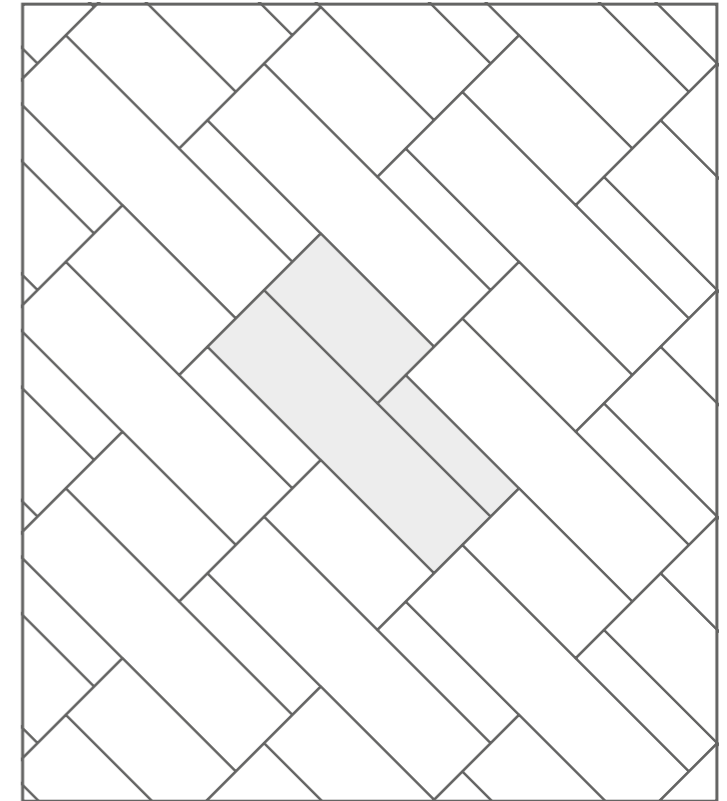
NAT: Naturale - Natural - Natur/unpoliert - Naturelle - Natural - Натуральный  
RG: Rigata

# SCHEMI DI POSA

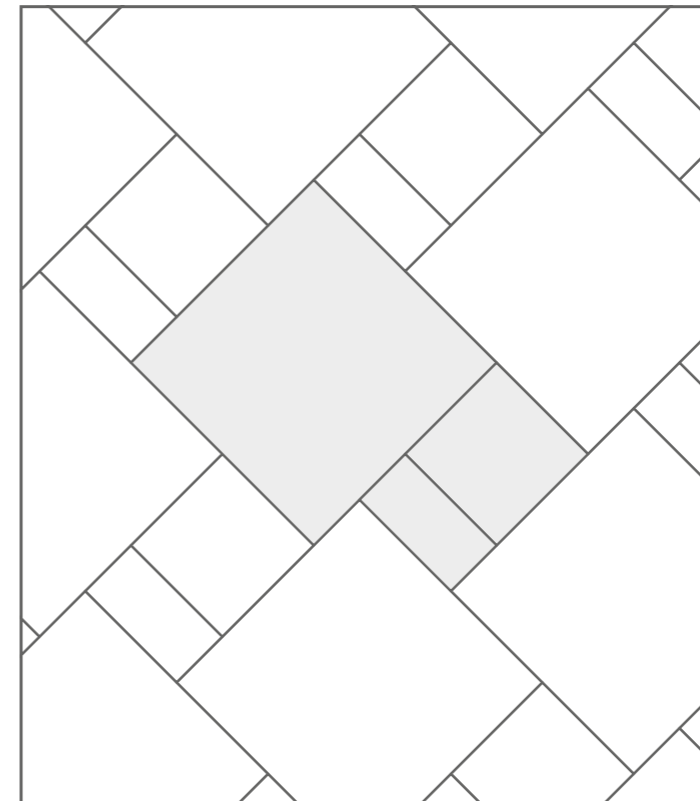
Laying patterns - Verlege muster - Plans de pose - Esquemas de colocación - Варианты укладки



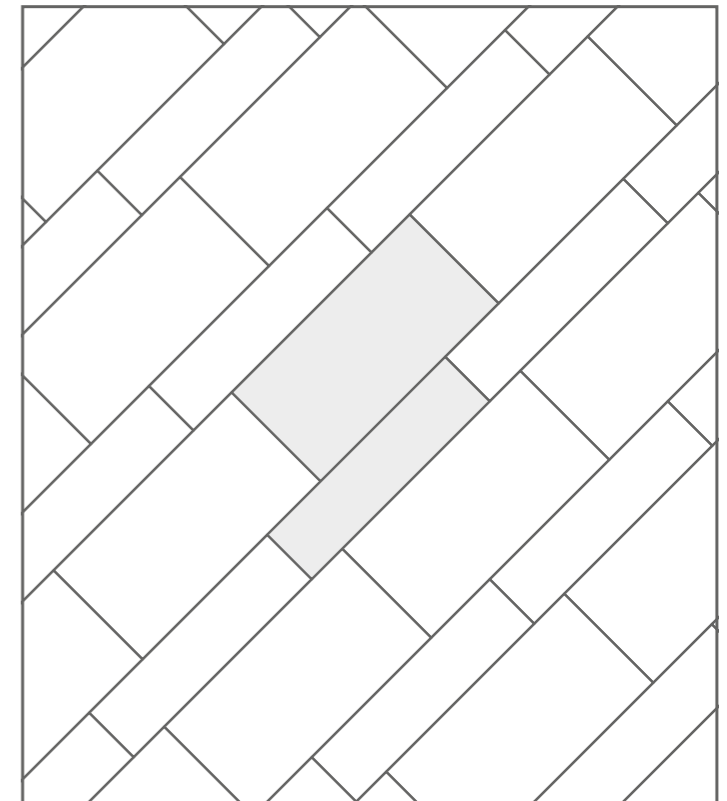
01 - 60x60: 57,1% / 30x60: 28,6% / 15x60: 14,3%



02 - 30x120: 57,1% / 30x60: 28,6% / 15x60: 14,3%



03 - 120x120: 72,7% / 60x60: 18,2% / 30x60: 9,1%



04 - 60x120: 66,6% / 30x120: 33,4%

## STANDARD EN 14411 - G

CARATTERISTICHE TECNICHE TECHNICAL DATA TECHNISCHE DATEN CARACTERISTIQUES TECHNIQUES CARACTERISTICAS TECNICAS ТЕХНИЧЕСКИЕ ХАРАКТЕРИСТИКИ	NORMA STANDARD NORM NORME NORMA ЗНАЧЕНИЯ	VALORI PRESCRITTI DALLE NORME EN 14411 - G INTERNATIONAL STANDARDS EN 14411 - G INTERNATIONALE NORMWERTE EN 14411 - G VALEURS PREVUES PAR LES NORMES EN 14411 - G VALORES PREVISTOS POR LAS NORMAS EN 14411 - G ПРЕДУСМОТРЕННЫЕ СТАНДАРТОМ EN 14411-G	*VALORE MEDIO Mirage® MIRAGE® AVERAGE VALUE MIRAGE® MITTELWERT VALEURS MOYEN MIRAGE® VALOR MEDIO MIRAGE® СРЕДНЕЕ ЗНАЧЕНИЕ MIRAGE®	
<b>CARATTERISTICHE DIMENSIONALI</b> - SIZE CHARACTERISTICS - MASSEIGENSCHAFTEN - DETERMINATION DES CARACTERISTIQUES DIMENSIONNELLES - CARACTERISTICAS DIMENSIONALES - РАЗМЕРНЫЕ ХАРАКТЕРИСТИКИ				
<b>LATI</b> SIDES - SEITEN COTES - CANTOS РАЗМЕРЫ СТОРОН	EN ISO 10545-2	± 0,6% MAX (± 2,0 mm MAX)	CONFORME COMPLYING - ERFÜLLT CONFORME - CONFORME СООТВЕТСТВУЕТ	
<b>SPESSORE</b> THICKNESS - DICKE ÉPAISSEUR - ESPESOR ТОЛЩИНА	EN ISO 10545-2	± 5,0% MAX (± 0,5 mm MAX)	CONFORME COMPLYING - ERFÜLLT CONFORME - CONFORME СООТВЕТСТВУЕТ	
<b>RETTILINEITÀ DEGLI SPIGOLI</b> STRAIGHTNESS OF SIDES - GERADLINIGKEIT DER KANTEN RECTITUDE DES ARÊTES - RECTITUD DE LOS CANTOS КОСОУГОЛЬНОСТЬ	EN ISO 10545-2	± 0,5% MAX (± 1,5 mm MAX)	CONFORME COMPLYING - ERFÜLLT CONFORME - CONFORME СООТВЕТСТВУЕТ	
<b>ORTOGONALITÀ</b> RECTANGULARITY - RECHTWINKLIGKEIT PERPENDICULARITÉ - ORTOGONALIDAD КРИВИЗНА СТОРОН	EN ISO 10545-2	± 0,6% MAX (± 2,0 mm MAX)	CONFORME COMPLYING - ERFÜLLT CONFORME - CONFORME СООТВЕТСТВУЕТ	
<b>PLANARITÀ</b> SURFACE FLATNESS - EBENFLÄCHIGKEIT PLANEITE DE SURFACE - PLANEIDAD КРИВИЗНА ЛИЦЕВОЙ ПОВЕРХНОСТИ	EN ISO 10545-2	± 0,5% MAX (± 2,0 mm MAX)	CONFORME COMPLYING - ERFÜLLT CONFORME - CONFORME СООТВЕТСТВУЕТ	
<b>ASSORBIMENTO D'ACQUA</b> WATER ABSORPTION - WASSERAUFNAHME ABSORPTION D'EAU - ABSORCIÓN DE AGUA ВОДОПОГЛОЩЕНИЕ	EN ISO 10545-3	≤ 0,5%	0,04%	
<b>RESISTENZA ALLA FLESSIONE</b> FLEXION RESISTANCE - BIEGEFESTIGKEIT RESISTANCE A LA FLEXION - RESISTENCIA A LA FLEXIÓN ПРЕДЕЛ ПРОЧНОСТИ ПРИ ИЗГИБЕ	EN ISO 10545-4	S ≥ 700 N (< 7,5 mm) S ≥ 1.300 N (> 7,5 mm) R ≥ 35 N/mm²	S ≥ 2.900 N R ≥ 50 N/mm²	
<b>RESISTENZA ALL'URTO</b> IMPACT RESISTANCE - STOSSFESTIGKEIT RESISTANCE AUX CHOCs - RESISTENCIA A LOS GOLPES УДАРОСТОЙКОСТЬ	EN ISO 10545-5	VALORE DICHIARATO DECLARED VALUE	0,91	
<b>RESISTENZA ALL'ABRASIONE</b> ABRASION RESISTANCE - ABRIEBFESTIGKEIT RESISTANCE A L'ABRASION - RESISTENCIA A LA ABRASIÓN СТОЙКОСТЬ К ИСТИРАНИЮ	EN ISO 10545-6	≤ 175 mm³	131 mm³	
<b>COEFFICIENTE DI DILATAZIONE TERMICA LINEARE</b> COEFFICIENT OF LINEAR THERMAL-EXPANSION - LINEARER WÄRMEAUDEHNUNGSKOEFFIZIENT COEFFICIENT DE DILATATION THERMIQUE LINEAIRE - COEFFICIENTE DE DILATACIÓN TÉRMICA LINEAL КОЭФФИЦИЕНТ ЛИНЕЙНОГО ТЕРМИЧЕСКОГО РАСШИРЕНИЯ	EN ISO 10545-8	—	α=6,8x10 <sup>-6</sup> °C <sup>-1</sup>	
<b>RESISTENZA AGLI SBALZI TERMICI</b> RESISTANCE TO THERMAL SHOCKS - BESTÄNDIGKEIT GEGEN TEMPERATURSCHWANKUNGEN RESISTANCE AUX CHOCs THERMIQUES - RESISTENCIA A LOS CHOQUES TÉRMICOS СТОЙКОСТЬ К ПЕРЕПАДАМ ТЕМПЕРАТУРЫ	EN ISO 10545-9	TEST SUPERATO SECONDO EN ISO 10545-1 PASS ACCORDING EN ISO 10545-1	NESSUN DANNO NO DAMAGE - KEIN SCHADEN AUCUN DOMMAGE - NINGUN DANO БЕЗ ПОВРЕЖДЕНИЙ	
<b>RESISTENZA AL GELO</b> FROST RESISTANCE - FROSTBESTÄNDIGKEIT RESISTANCE AU GEL - RESISTENCIA AL HIELO МОРОЗОСТОЙКОСТЬ	EN ISO 10545-12	TEST SUPERATO SECONDO EN ISO 10545-1 PASS ACCORDING EN ISO 10545-1	NESSUN DANNO NO DAMAGE - KEIN SCHADEN AUCUN DOMMAGE - NINGUN DANO БЕЗ ПОВРЕЖДЕНИЙ	
<b>RESISTENZA ALL'ATTACCO CHIMICO</b> RESISTANCE TO CHEMICALS - CHEMIKALIENBESTÄNDIGKEIT RESISTANCE A L'ATTAQUE CHIMIQUE - RESISTENCIA QUÍMICA ХИМИЧЕСКАЯ СТОЙКОСТЬ	EN ISO 10545-13	UB MIN.	UA ULA UHA	
<b>RESISTENZA ALLE MACCHIE</b> RESISTANCE TO STAINS - FLECKENBESTÄNDIGKEIT RESISTANCE AUX TACHES - RESISTENCIA A LAS MANCHAS УСТОЙЧИВОСТЬ К ПЯТНООБРАЗОВАНИЮ	EN ISO 10545-14	VALORE DICHIARATO DECLARED VALUE	5 NAT/RG	
<b>CESSIONE DI PIOMBO E CADMIO</b> LEAD AND CADMIUM DISCHARGE - ABGABE VON BLEI UND CADMIUM PERTE DE PLOMB ET CADMIUM - CESIÓN DE PLOMO Y CADMIO ВЫДЕЛЕНИЕ СВИНЦА И КАДМИЯ	EN ISO 10545-15	VALORE DICHIARATO DECLARED VALUE	< AL LIMITE DI RILEVAMENTO < THAN INSTRUMENT LIMIT < UNMESSBARES WERT < LIMITE DE L'INSTRUMENT < LIMITE DEL INSTRUMENTO < НА ПРЕДЕЛЕ ОПРЕДЕЛИМОСТИ	
<b>SCIVOLOSITÀ</b> SKID RESISTANCE - RUTSCHWERT GLISSANCE - ADHERENCIA СКОЛЬЗКОСТЬ			<b>NAT</b>	
	DM. 236/89 BCRA	> 0,40	> 0,40	> 0,40
	ASTM Wet and Dry	> 0,60	> 0,60	> 0,60
	DIN 51130	-	R9	R11
	DIN 51097	-	-	A+B+C
	ENV 12633	≥ CL1	CL1	CL2
	UNI EN 13036 - 4:2011	≥ 36	-	≥ 36

Per i certificati specifici, contattare Mirage® SpA - For specific certificates, please contact Mirage® SpA - Für die speziellen Zertifikate wenden Sie sich bitte an Mirage® SpA - Pour les certificats spécifiques, veuillez contacter Mirage® SPA - Para los certificados específicos, contactar Mirage® SPA - Для сертификатов обращайтесь в компанию Mirage® SpA

[www.mirage.it](http://www.mirage.it)

		NAT	RG
	DM. 236/89 BCRA	> 0,40	> 0,40
	ASTM C1028	WET SCOF > 0,60	> 0,80
	ASTM C1028	DRY SCOF > 0,60	> 0,70
	ANSI A137.1	WET DCOF > 0,42	> 0,85
	DIN 51130	-	R10
	DIN 51097	-	A
	ENV 12633	≥ CL1	CL2
	UNI EN 13036 - 4:2011	≥ 36	≥ 36

**EVO 2/e™**  
contemporary landscape

**SCIVOLOSITÀ** SKID RESISTANCE  
RUTSCHWERT - GLISSANCE  
ADHERENCIA - СКОЛЬЗКОСТЬ

SCOF: Static coefficient of friction DCOF: Dynamic coefficient of friction

\* I valori sono approssimativi e possono variare in base alla produzione - Values are approximate and may vary slightly depending on the production

**EVO 2/e™**  
contemporary landscape

PER DETTAGLI SUL PRODOTTO EVO\_2/E™ IN 20 MM DI SPESSORE E SUI RELATIVI SISTEMI DI POSA ED, IN PARTICOLARE, PER LE RACCOMANDAZIONI, ACCORGIMENTI, LIMITAZIONI DI UTILIZZO E PRECAUZIONI IN FASE DI POSA, SI RACCOMANDA DI PRENDERE VISIONE DEL CATALOGO EVO\_2/E™ E DEL SITO WWW.MIRAGE.IT.

FOR FURTHER DETAILS ON THE EVO\_2/E™ 20 MM PRODUCT AND THE INSTALLATION SYSTEMS, IN PARTICULAR FOR RECOMMENDATIONS, RESTRICTIONS OF USE, AND PRECAUTIONS DURING INSTALLATION, PLEASE REFER TO WWW.MIRAGE.IT AND TO THE EVO\_2/E™ CATALOGUE.

FÜR DETAILS ZUM PRODUKT EVO\_2/E™ 20 MM. STÄRKE UND ENTSPRECHENDE VERLEGESYSTEME, INSBESONDERE HINSICHTLICH HINWEISE UND ANMERKUNGEN, NUTZUNGSEINSCHRÄNKUNGEN UND VORSICHTSMASSNAHMEN WÄHREND DER VERLEGUNG, WIRD DIE EINSICHT DES KATALOGS EVO\_2/E™ UND DER WEBSEITE WWW.MIRAGE.IT EMPFOHLEN.

POUR DE PLUS AMPLES DÉTAILS SUR LES PRODUITS DE 20 MM D'ÉPAISSEUR ET SUR LEURS SYSTÈMES DE POSE, ET EN PARTICULIER, POUR LES RECOMMANDATIONS, MISES À JOUR, LIMITATIONS D'USAGE ET PRÉCAUTIONS EN PHASE DE POSE, VEUILLEZ PRENDRE CONNAISSANCE DU CATALOGUE EVO\_2/E™ ET DU SITO WWW.MIRAGE.IT.



[www.mirage.it](http://www.mirage.it)



**Mirage Granito Ceramico S.p.a.**

41026 - Pavullo (MO) ITALY - Via Giardini Nord, 225  
 Tel. +39 0536 29611 - Fax +39 0536 21065  
 info@mirage.it - www.mirage.it

**Mirage Project Point**

20121 - Milano ITALY  
 Via Marsala, 7  
 Tel. +39 02 65560879  
 projectpoint@mirage.it  
 www.mirage.it/projectpoint

**Mirage USA INC.**

100 Crescent Court  
 Suite 700 - Dallas, TX 75201  
 Ph. +1 214 459 2760  
 Ph. +1 214 459 2762  
 TAX ID: 75 2773306  
 info@mirageusa.net  
 www.mirageusa.net

**Mirage Middle East FZE**

Warehouse No. RA08XA06  
 Jebel Ali - PO BOX 18366 Dubai  
 United Arab Emirates  
 PH. +971 48810600  
 miragemiddleeast@mirage.it  
 License No. 137764  
 Registration No. 159714